



Configuring SSL for JD Edwards EnterpriseOne

Put the 'S' in Your HTTP

By Carlos Sebaaly

E1 Editor's Note: Since JD Edwards EnterpriseOne has shifted to a pure internet architecture, HTTP protocol has become the sole means of access to applications for end users. JD Edwards EnterpriseOne became accessible through any certified version of the different browsers available in the market. This allowed for a simpler and broader exposure to users across dispersed locations via networks or internet. In this article, Carlos will explain the process of securing this protocol by enabling SSL (Secure Socket Layer) over HTTP so administrators can ensure that access to JD Edwards EnterpriseOne web server is authentic and encrypted via HTTPS instead of HTTP. The steps provided apply to JD Edwards EnterpriseOne web servers based on Oracle WebLogic Server versions 11g and 12c on Microsoft Windows.

Obtain and Install Required Certificates

To use SSL, the server needs a private key, a digital certificate containing the matching public key, and a certificate for at least one trusted certificate authority. The digital certificate authenticates the server and the key pair that is shared between the client and server allows encrypted communication using these keys.

Sun Microsystem's keytool is the main Java utility used in the different steps of this process, such as generating keystores, private keys, Certificate Signing Request (CSR) and installing the certificate chain obtained from a Certificate Authority. These steps will be explained in more detail throughout this article.

1.1 Create Keystores and Public/Private Key Pair

The first step in the SSL configuration process is to create the identity keystore which is the container of the required keys and certificates that will be generated during this process.

1. Under the EnterpriseOne DOMAIN_HOME in the WebLogic Server directory structure, create a directory named 'keystore' in which certificates and keystore files will be placed.

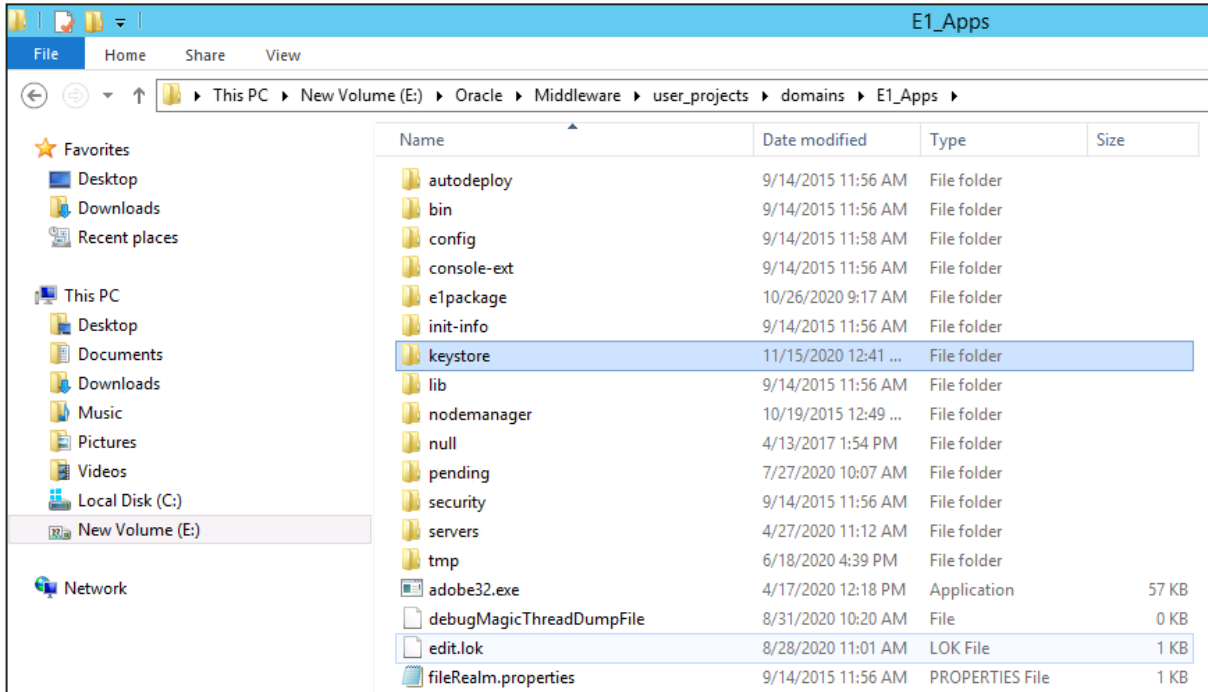


Figure 1: Keystore directory under E1 DOMAIN_HOME

2. Open Command Prompt. Right-click on Command Prompt shortcut and select 'Run as administrator'. See Figure 2.

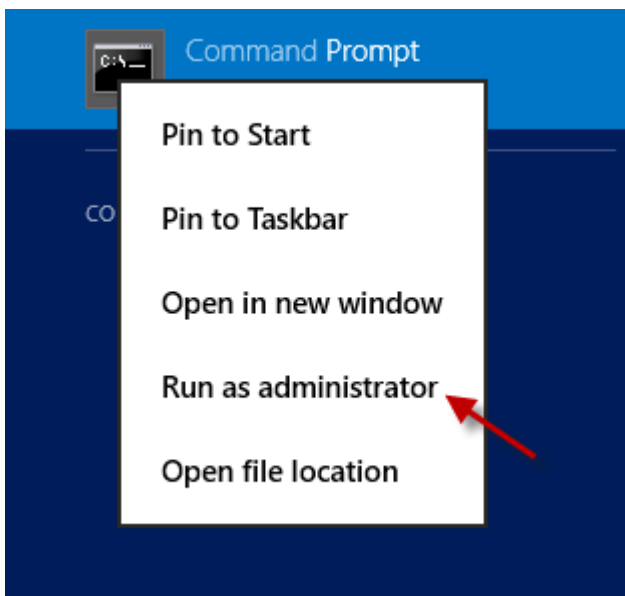


Figure 2: Run Command Prompt as Administrator

This Article Continues...

Subscribers, log in from our main search page to access the full article:

www.JDEtips.com/MyAccess.html

Not a Subscriber? Gain access to our full library of JDE topics:

www.JDEtips.com/JD-Edwards-Library

Visit www.JDEtips.com for information on the JDEtips University schedule, private training and consulting, and our Knowledge Express Document Library.

License Information: The use of JDE is granted to JDEtips, Inc. by permission from J.D. Edwards World Source Company. The information on this website and in our publications is the copyrighted work of JDEtips, Inc. and is owned by JDEtips, Inc.

NO WARRANTY: This documentation is delivered as is, and JDEtips, Inc. makes no warranty as to its accuracy or use. Any use of this documentation is at the risk of the user. Although we make every good faith effort to ensure accuracy, this document may include technical or other inaccuracies or typographical errors. JDEtips, Inc. reserves the right to make changes without prior notice.

Oracle and J.D. Edwards EnterpriseOne and World are trademarks or registered trademarks of Oracle Corporation. All other trademarks and product names are the property of their respective owners.

Copyright © by JDEtips, Inc.