


## Adding Media Object Support to Applications: Or How to Get that Paperclip Thing to Work

By Scott Beebe, AMX International

*Editor's Note: You know that paperclip thing on the left side of the grid in OneWorld®?*

 It indicates that there is a media object attached to the record. Scott continues his excellent series of technical tips with this article on how to add media-object support to OneWorld or custom programs that do not have this capability.

Most applications in OneWorld already have support for attaching media objects to records. This enables you to store miscellaneous text or other types of files including Excel or Word files,

etc., that are associated with the record. But, what about OneWorld applications or new custom applications that do not have media object support? I found a standard application that did not have this capability.

The Speed Time Entry Revisions screen (P051121, form W051121) doesn't give you the ability to add media object attachments to the time entry records. It displays the "paperclip/magnifying glass" icon in the header in the upper left-hand corner of the grid just to fool you. I had a client who wanted to enable media object attachments on this screen.

In this article I will walk you through adding media object support to the Speed Time Entry Revisions screen, step-by-step. The steps are the same for any standard or custom application.

### Create Media Object Data Structure

The first thing we need to do is to find out if there is already a Media Object Data Structure for the data that we want to connect media objects to. Go to the OMW, click on the Search tab, type GT\* in the Search field, and click on Find. You will then see a list of all of the Media Object Data

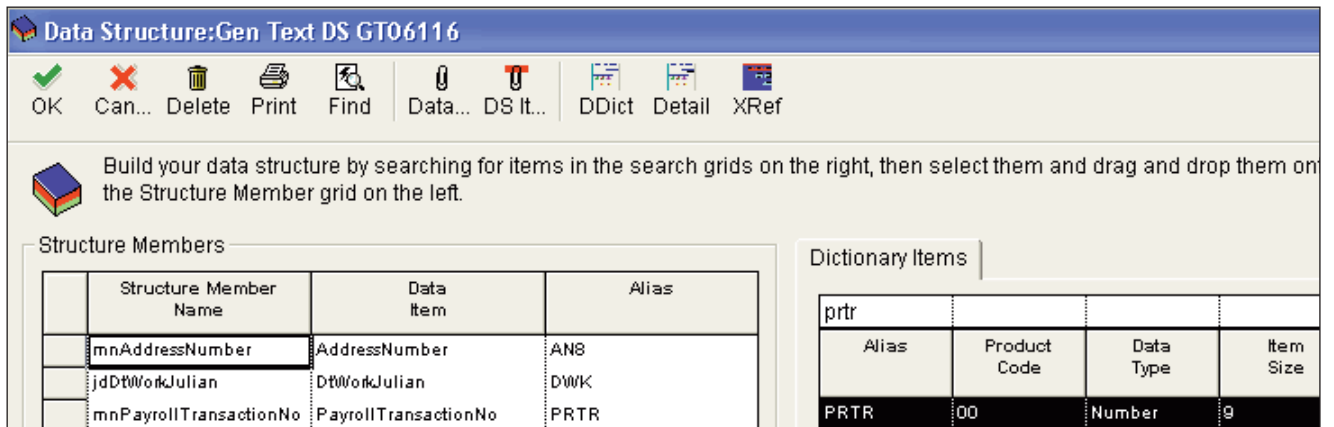


Figure 1: Data Structure

- 1) Click on Form from the main menu and select Media Objects Setup...
- 2) Click on the Enable Automatic Media Object Functionality check box.
- 3) In the Row Level Defaults section, click on the Edit Mode radio button. This gives the application the ability to add and edit media objects. If

you wanted to give "Read Only" access to the media objects, you would select Display Mode.

- 4) In the Row Level Defaults section, click on Define Row Key.
- 5) Double-click on the Media Object Structure folder.

# JDEtips on Technical

*Adding Media Object...continued from page 1*

Structures available. All of them start with "GT" and the numbering afterwards indicates the table it corresponds to.

**Object Name:** GT06116  
**Object Description:** Employee transaction detail file  
**Product Code:** 55  
**Product System Code:** 06  
**Object Use:** Leave blank

*For example, GT4211A is used to associate media objects with sales order detail records (F4211). The data shown in the Speed Time Entry Revisions screen comes from the F06116*

*table. We would need to find the data structure called GT06116. As you will notice, this data structure does not exist, so we will need to create it.*

If the "GT" data structure for the time entry data existed, we could skip this step.

- 1) Create a Media Object Data Structure in the OMW
- 2) Enter the following information.
- 3) Go to the Data Structure Design Aid. Add the following aliases to the data structure: AN8, DWK, and PRTR. Your data structure should look like Figure 1.

**Note: The Media Object Data Structure MUST contain the exact same fields used in the primary key of the table for which the media objects will be associated.**

- 4) Save the data structure.

## Enable Media Object Functionality

The second step is to enable the media object functionality on the individual form of the application. You can enable media object functionality at the form level or at the row level. For our example I will be setting it up at the row level.

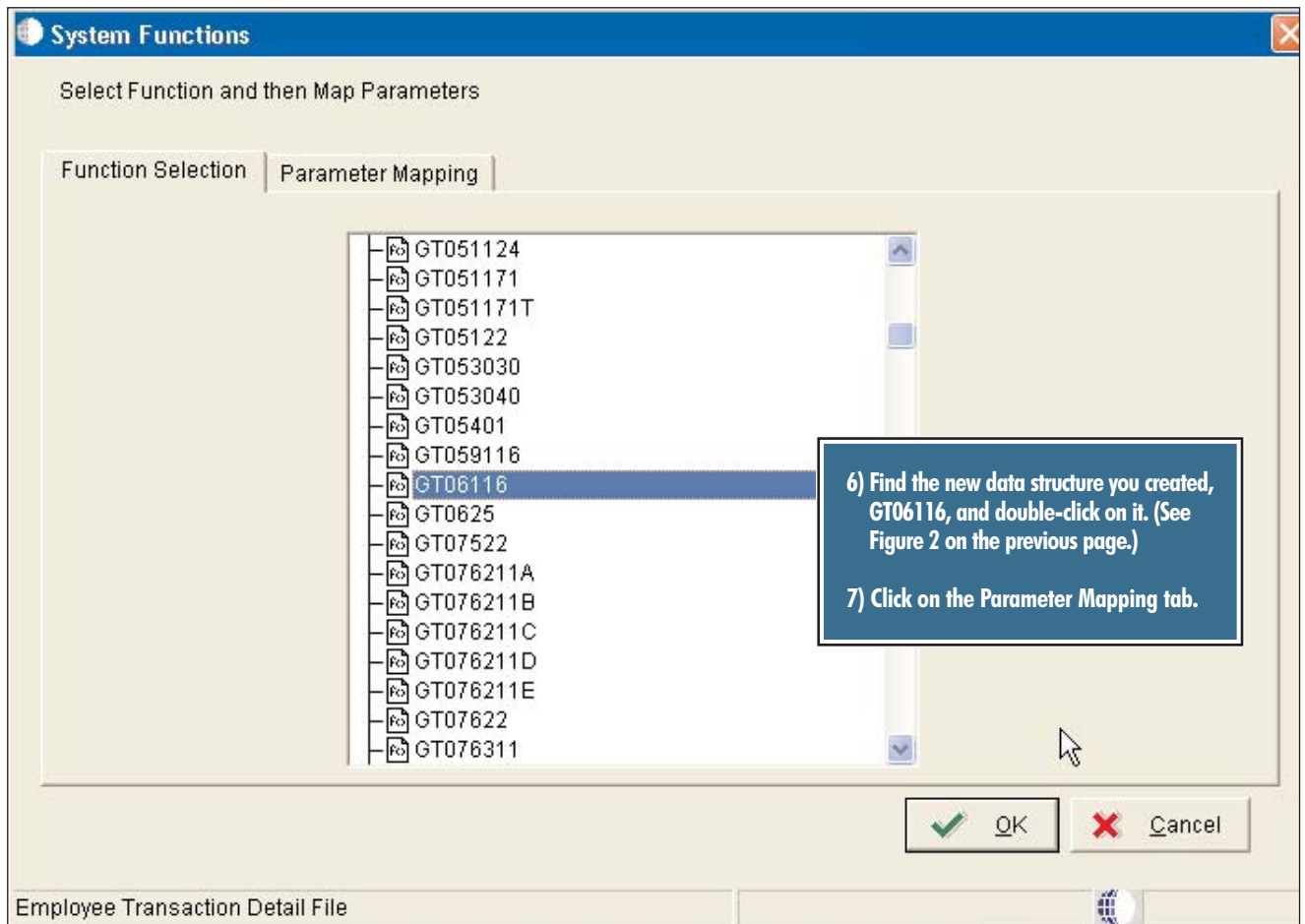


Figure 2: New Data Structure

## This Article Continues...

**Subscribers**, log in from our main search page to access the full article:

[www.JDEtips.com/MyAccess.html](http://www.JDEtips.com/MyAccess.html)

**Not a Subscriber? Gain access to our full library of JDE topics:**

[www.JDEtips.com/JD-Edwards-Library](http://www.JDEtips.com/JD-Edwards-Library)

Visit [www.JDEtips.com](http://www.JDEtips.com) for information on the JDEtips University schedule, private training and consulting, and our Knowledge Express Document Library.

License Information: The use of JDE is granted to JDEtips, Inc. by permission from J.D. Edwards World Source Company. The information on this website and in our publications is the copyrighted work of JDEtips, Inc. and is owned by JDEtips, Inc.

NO WARRANTY: This documentation is delivered as is, and JDEtips, Inc. makes no warranty as to its accuracy or use. Any use of this documentation is at the risk of the user. Although we make every good faith effort to ensure accuracy, this document may include technical or other inaccuracies or typographical errors. JDEtips, Inc. reserves the right to make changes without prior notice.

Oracle and J.D. Edwards EnterpriseOne and World are trademarks or registered trademarks of Oracle Corporation. All other trademarks and product names are the property of their respective owners.

Copyright © by JDEtips, Inc.