

# Easy CSV Output for EnterpriseOne Reports

By Paul Hanson

**EI** *Editor's Note: No ERP system, including our dearly beloved JDE, has all the reports in exactly the format we like. That's why so many of us turn to spreadsheet programs such as Microsoft Excel to take standard report data and further slice it and dice it to our liking. No, this article isn't about creating Excel Pivot Tables! It's about how you can get cleaner Comma Separated Variable data out of your JDE reports. Seems there is a bit of a problem with report headers being treated like data, and this tip shows you how to clean that up.*

### Introduction

CSV (Comma Separated Variable) files are commonly used to import data from the JD Edwards database into Microsoft Excel. While EnterpriseOne® supports CSV output by simply clicking the CSV output option when submitting a batch version, it does not always provide useable CSV output. On some reports, it tends to co-mingle the page headings with the CSV output, rendering it difficult to work with. This is especially true of pre EnterpriseOne 8.0 reports.

**If your end users are big Excel fans, but don't have that same love for EnterpriseOne CSV output, this solution is for you.**

Object Name	Description	Object Type
R5741016	Item Pricing and Points Report	UBE
T5741016	Item Pricing and Points Report PO Template	DSTR
M010001	Item Pricing and Points Report – PDF	UBEVER
M010002	Item Pricing and Points Report – CSV	UBEVER

Figure 1 – Object List

If your end users are big Excel fans, but don't have that same love for EnterpriseOne CSV output, this solution is for you.

### Business Case

The business case for this solution is pretty simple. According to the following examples, let's assume you have an end user who would like to see a report that shows a list of items from the item branch, along with their corresponding prices and other business-specific information about the items. In addition, the end user has requested that the output be presented in CSV format so that it can be manipulated in Excel. Lastly, the user does not want the usual page headings that are mixed into the data when CSV output is chosen during the submission of the batch version.

### The Solution

First, let's take a look at the objects required for this solution. Figure 1 shows the objects that will be covered in the solution. A custom business view was also created. It has purposely been left out of this article because the example I have joins the F4102 table to a custom

table that is really irrelevant to the topic. Any business view associated with the F4102 would do for this example.

In order to make this solution able to print in PDF or CSV formats, you will need a processing option template that will allow the end user to specify which format to present. Figure 2 illustrates the processing option template. I usually use the EV01 data element for flags like the one shown in Figure 3. But, any one-character data item will work. It will simply be used to switch between CSV and PDF output.

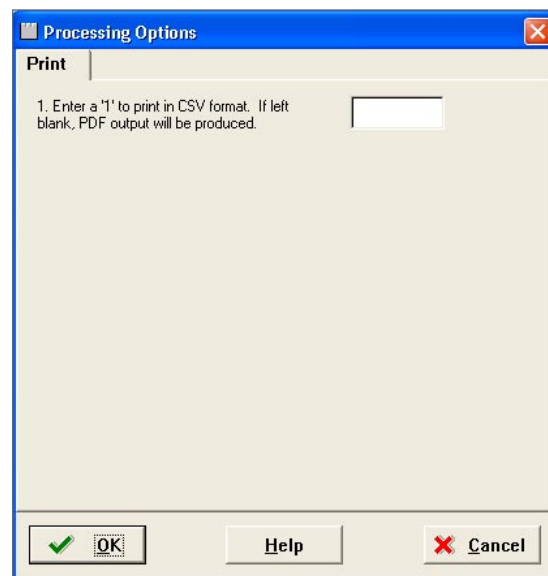


Figure 2 – Processing Option Template

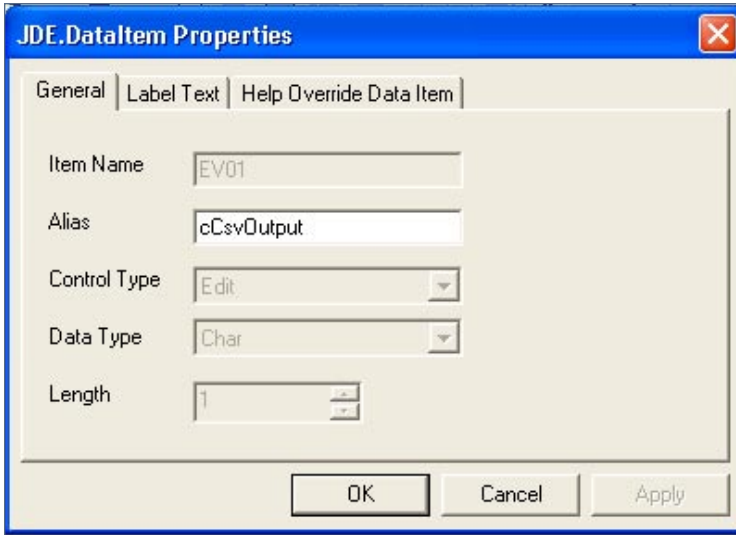


Figure 3 – Processing Option Data Element

Now, let's move onto the UBE itself. After launching RDA, complete the normal tasks for creating a new report. First, choose the type of report, which in this case is a columnar report as shown in Figure 4.

Next, choose a business view, which in this case should be a view related to the F4102. See Figures 5 and 6.

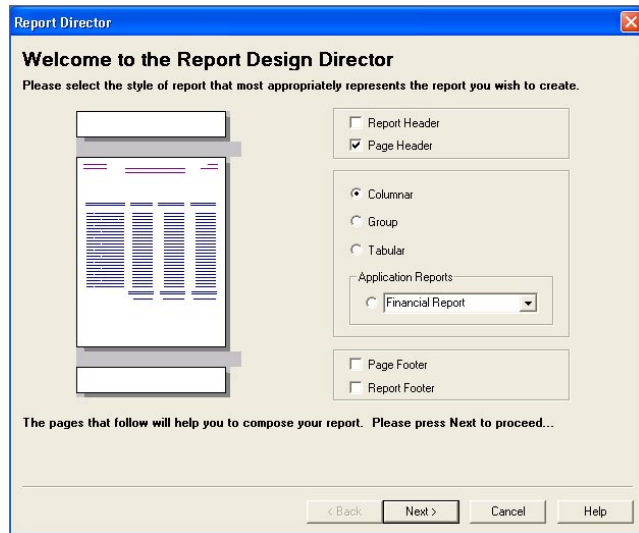


Figure 4 – Report Type

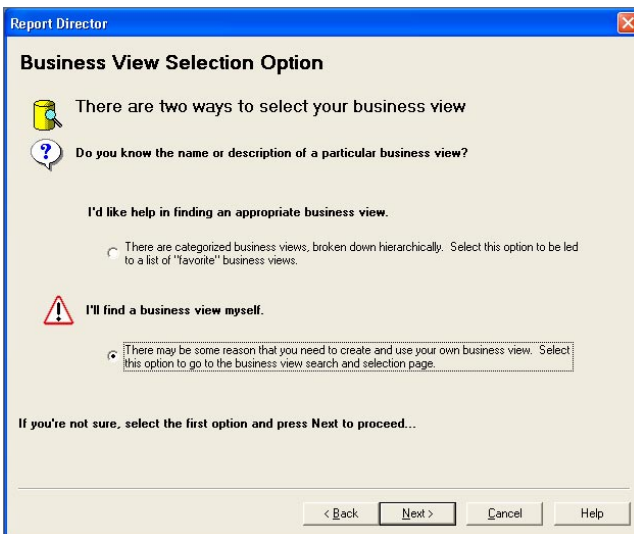


Figure 5 – Selecting a Business View, Step 1

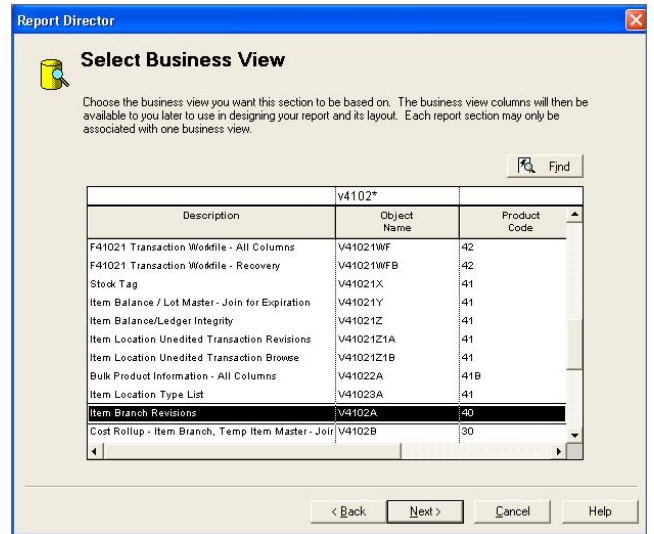


Figure 6 – Selecting a Business View, Step 2

## This Article Continues...

**Subscribers**, log in from our main search page to access the full article:

[www.JDEtips.com/MyAccess.html](http://www.JDEtips.com/MyAccess.html)

**Not a Subscriber? Gain access to our full library of JDE topics:**

[www.JDEtips.com/JD-Edwards-Library](http://www.JDEtips.com/JD-Edwards-Library)

Visit [www.JDEtips.com](http://www.JDEtips.com) for information on the JDEtips University schedule, private training and consulting, and our Knowledge Express Document Library.

License Information: The use of JDE is granted to JDEtips, Inc. by permission from J.D. Edwards World Source Company. The information on this website and in our publications is the copyrighted work of JDEtips, Inc. and is owned by JDEtips, Inc.

NO WARRANTY: This documentation is delivered as is, and JDEtips, Inc. makes no warranty as to its accuracy or use. Any use of this documentation is at the risk of the user. Although we make every good faith effort to ensure accuracy, this document may include technical or other inaccuracies or typographical errors. JDEtips, Inc. reserves the right to make changes without prior notice.

Oracle and J.D. Edwards EnterpriseOne and World are trademarks or registered trademarks of Oracle Corporation. All other trademarks and product names are the property of their respective owners.

Copyright © by JDEtips, Inc.