

EnterpriseOne 9.1 Pages Creation

By Mike Wright, CNC Administrator, Werner Co.

Editor's Note: By now we've all read about or experienced the EnterpriseOne 9.1 User Interface from the user's perspective, and know all about pages and how to navigate them. But how do they get there in the first place? Mike Wright thoroughly documents the process, with the "from the trenches" tips and things to look out for.

Introduction

E1 Pages are a way to give users a graphical presentation of menus. There is a lot of documentation out there on their use and creation but I find that new people trying to create them get confused from the documentation and always seem to need help to get going. This article is intended to simplify the creation process to get you going faster and will also provide a few tips and tricks along the way. If you need more detail or want to get into more advanced E1 Pages, please go to the Oracle support site to find their reference material.

In this article, we will work through the following areas:

1. Configuring the Generator
2. Creating Pages
3. Generating Pages
4. Uploading Content
5. Managing E1 Pages

Configuring the Generator

To create and generate E1 Pages, you just need a PC running Windows. You don't need a web development client to work with E1 Pages, so that makes it accessible to more people. In my example, I am running a PC with Windows 7.

If you don't have it already, you will need to download the E1 Page Generator from the Oracle support site. Currently you can get to it in document 1401833.1 or you can search for E1 Pages and look through the search list.

Once you download it, you will get a zip file similar to what you see in Figure 1.



Figure 1: E1PageGenerator Zip File

The current version of the generator is 4.01. Figure 2 shows the full name.

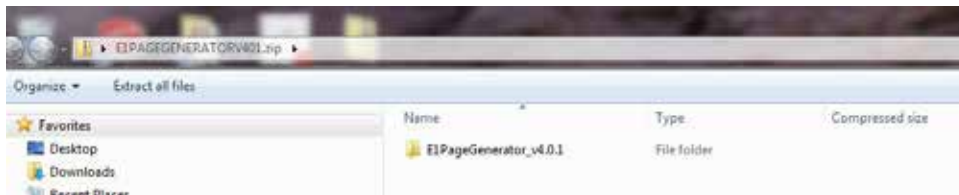


Figure 2: Generator File Full Name

Right click on the zip file to extract from it. You should see a screen similar to Figure 3.

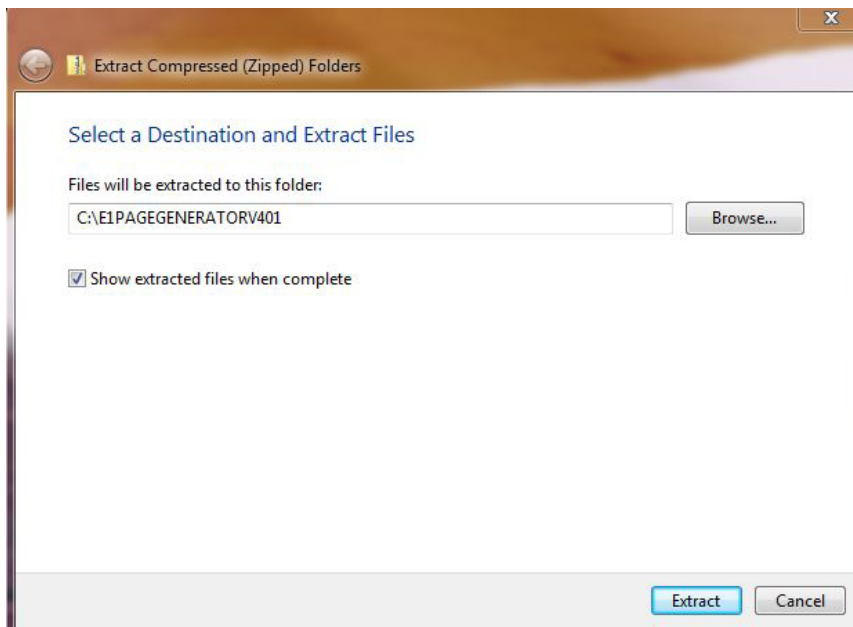


Figure 3: Extract Wizard

This Article Continues...

Subscribers, log in from our main search page to access the full article:

www.JDEtips.com/MyAccess.html

Not a Subscriber? Gain access to our full library of JDE topics:

www.JDEtips.com/JD-Edwards-Library

Visit www.JDEtips.com for information on the JDEtips University schedule, private training and consulting, and our Knowledge Express Document Library.

License Information: The use of JDE is granted to JDEtips, Inc. by permission from J.D. Edwards World Source Company. The information on this website and in our publications is the copyrighted work of JDEtips, Inc. and is owned by JDEtips, Inc.

NO WARRANTY: This documentation is delivered as is, and JDEtips, Inc. makes no warranty as to its accuracy or use. Any use of this documentation is at the risk of the user. Although we make every good faith effort to ensure accuracy, this document may include technical or other inaccuracies or typographical errors. JDEtips, Inc. reserves the right to make changes without prior notice.

Oracle and J.D. Edwards EnterpriseOne and World are trademarks or registered trademarks of Oracle Corporation. All other trademarks and product names are the property of their respective owners.

Copyright © by JDEtips, Inc.