



# EnterpriseOne Java Application Server (JAS) for WebSphere5

By Bill Loban

**Editor's Note:** This paper addresses the changes that have occurred since the writing of the JAS original Installation paper (EnterpriseOne® Java Application Server (JAS) published as a white paper in January 2005. The original paper addressed the installation of version Xe of the EnterpriseOne product using WebSphere 4. This amendment will detail the installation of tools release 8.94 utilizing WebSphere 5.0.

## 1. Installing WebSphere 5.0

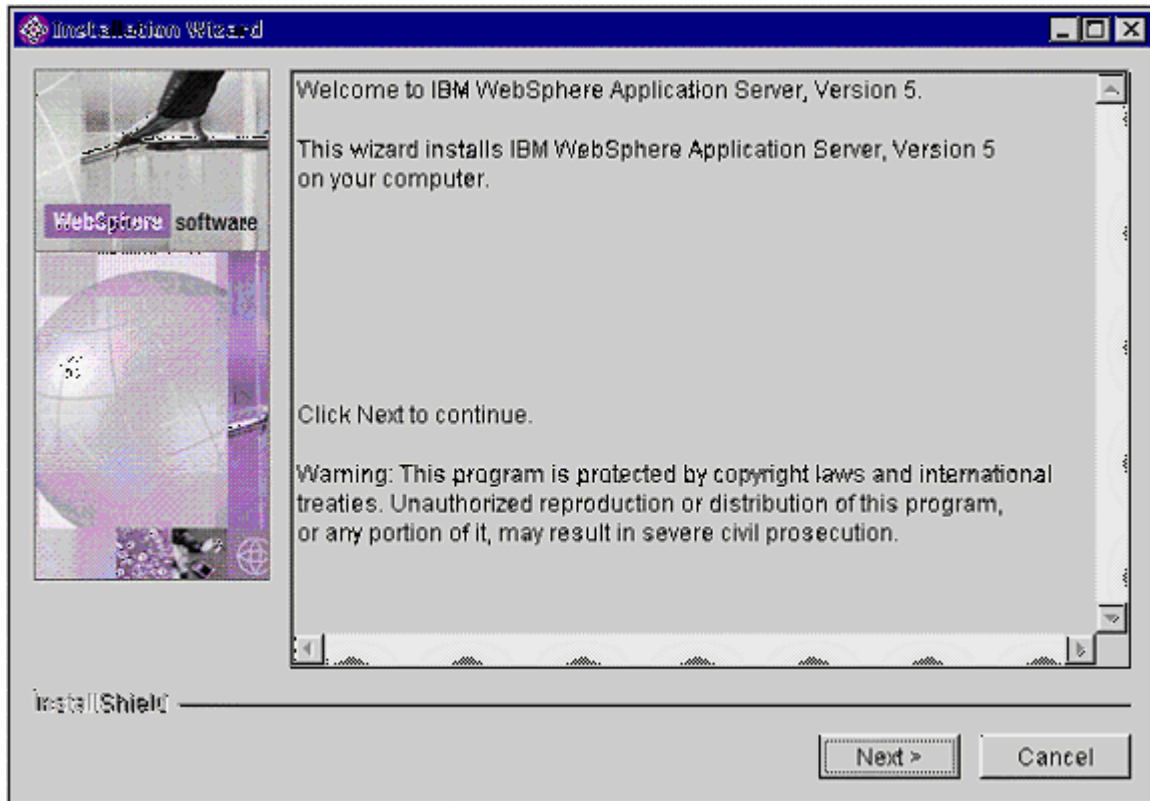
Insert the CD labeled WebSphere 5.0 application server. If auto run does not start click on Start → Run and enter x:\windows\WAS50\Install.exe (where x is the letter of the CD drive). The following screen appears:



Select the desired language for the installation and click OK.



## EnterpriseOne Java Application Server (JAS) for WebSphere5



Click Next from the Welcome screen.

## This Article Continues...

**Subscribers**, log in from our main search page to access the full article:

[www.JDEtips.com/MyAccess.html](http://www.JDEtips.com/MyAccess.html)

**Not a Subscriber? Gain access to our full library of JDE topics:**

[www.JDEtips.com/JD-Edwards-Library](http://www.JDEtips.com/JD-Edwards-Library)

Visit [www.JDEtips.com](http://www.JDEtips.com) for information on the JDEtips University schedule, private training and consulting, and our Knowledge Express Document Library.

License Information: The use of JDE is granted to JDEtips, Inc. by permission from J.D. Edwards World Source Company. The information on this website and in our publications is the copyrighted work of JDEtips, Inc. and is owned by JDEtips, Inc.

NO WARRANTY: This documentation is delivered as is, and JDEtips, Inc. makes no warranty as to its accuracy or use. Any use of this documentation is at the risk of the user. Although we make every good faith effort to ensure accuracy, this document may include technical or other inaccuracies or typographical errors. JDEtips, Inc. reserves the right to make changes without prior notice.

Oracle and J.D. Edwards EnterpriseOne and World are trademarks or registered trademarks of Oracle Corporation. All other trademarks and product names are the property of their respective owners.

Copyright © by JDEtips, Inc.