



EnterpriseOne Security Comparison UBE

By Mike Wright, Werner Co.

Editor's Note: *Mike Wright offers here a custom solution for comparing user or group security profiles. This can help you when you need to change security for an individual or if you want to ensure that groups are set up correctly. It is also a handy tool for simply "cleaning house", where you might want to eliminate duplications among security groups or remove profiles that are no longer needed. We think you'll find this tip very helpful in streamlining and auditing your security environment.*

In the new releases of EnterpriseOne[®], security has added user roles. These work nice and if you set them up properly, it can save you a lot of time. For example if someone currently has a set of security for a job function and is then asked to do an additional job, you can simply add an additional role to their profile. Now that's if it is set up properly and you are on a newer release. But what do you do if you are using EnterpriseOne Xe or older? Things can get a bit more complicated at that point depending on how your security is set up. The focus of this article will be some ways to analyze or handle the ever changing security access your users will need to do their jobs as their jobs and tasks change.

If a user simply changes jobs, then you can usually get away with changing their group. That is about as easy as it gets. Typically that is not going to be the case.

Another relatively simple situation is one where your *PUBLIC application security has been set to Run N, Install N. If you have that on the *PUBLIC level and your groups are not given access to all objects, then you can often just add records from one group to another to give a user additional access — as long as they need all of the access of that different profile.

Now if you have one of the situations already listed, then count yourself lucky. A lot of companies are not that simple or easily set up. Some even have hybrids or mixes of security. One common approach is to give *PUBLIC access to all objects but no actions. That basically gives an inquiry-only type access on the *PUBLIC level. Then there are some objects that are taken away from the *PUBLIC level but the rest happens on the group or individual access. Some groups will have actions given back to the necessary objects and some groups that require more access are given back access to all objects. When you factor all this together, you get a rather complex security setup that can make it very difficult to combine securities.

Creating a comparison UBE

Before we go any farther, let's walk through setting up a custom UBE that can be used for comparison purposes. It is not a very difficult report to create but can be a very powerful tool to use.

First thing to do is create a custom processing option template. Figure 1 shows this template.



EnterpriseOne Security Comparison UBE

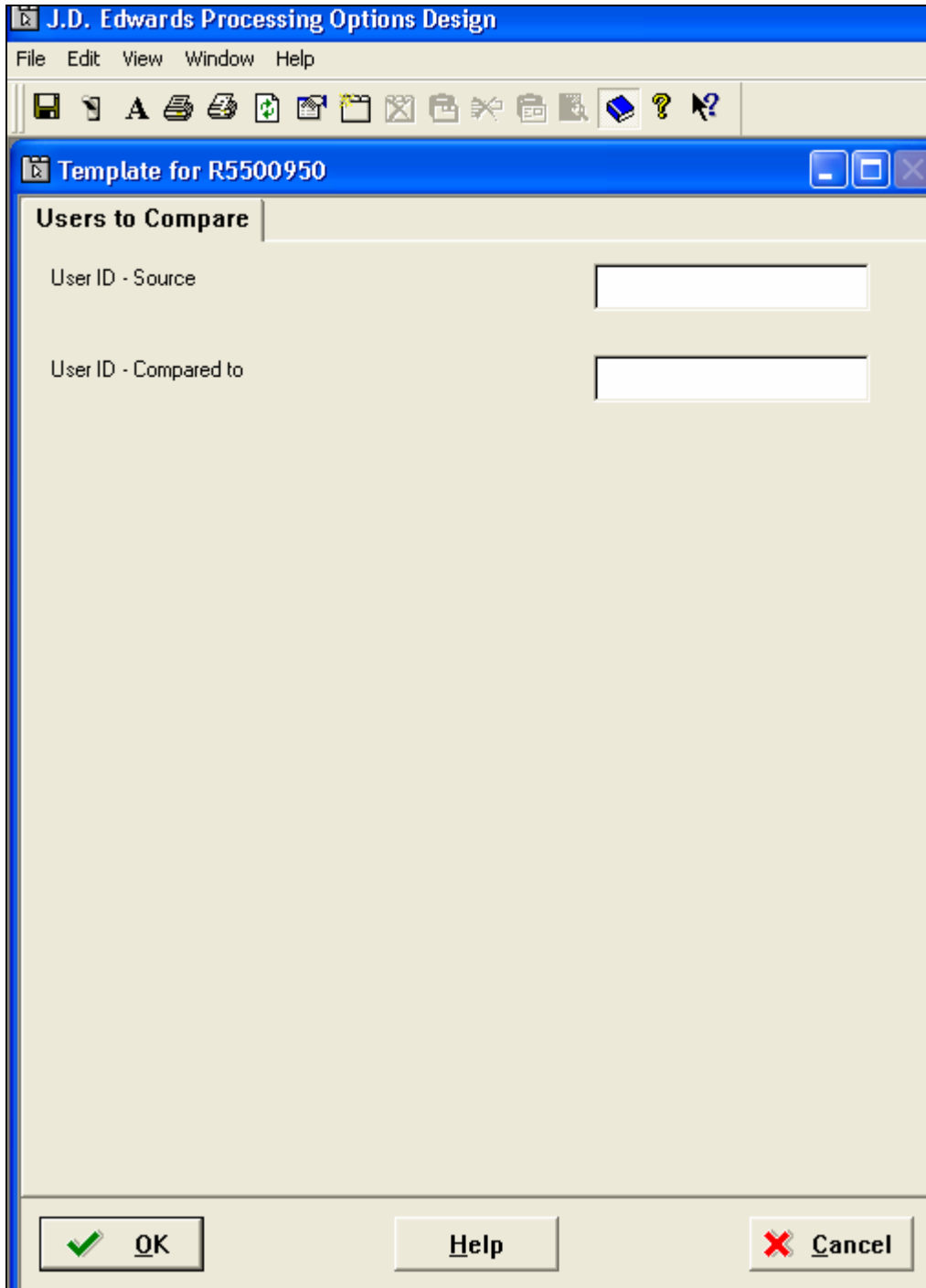


Figure 1 - Processing Option Template

There is not much to this processing option template. You just need the data item USER twice. You can call them whatever you like or even use the default of szUserId. Then change the second one to szUserId2. You could keep them clearer by using szUserSource and szUserDestination.

This Article Continues...

Subscribers, log in from our main search page to access the full article:

www.JDEtips.com/MyAccess.html

Not a Subscriber? Gain access to our full library of JDE topics:

www.JDEtips.com/JD-Edwards-Library

Visit www.JDEtips.com for information on the JDEtips University schedule, private training and consulting, and our Knowledge Express Document Library.

License Information: The use of JDE is granted to JDEtips, Inc. by permission from J.D. Edwards World Source Company. The information on this website and in our publications is the copyrighted work of JDEtips, Inc. and is owned by JDEtips, Inc.

NO WARRANTY: This documentation is delivered as is, and JDEtips, Inc. makes no warranty as to its accuracy or use. Any use of this documentation is at the risk of the user. Although we make every good faith effort to ensure accuracy, this document may include technical or other inaccuracies or typographical errors. JDEtips, Inc. reserves the right to make changes without prior notice.

Oracle and J.D. Edwards EnterpriseOne and World are trademarks or registered trademarks of Oracle Corporation. All other trademarks and product names are the property of their respective owners.

Copyright © by JDEtips, Inc.