

Environment Copying Made Simple for EnterpriseOne

By Dwight A. Paul, III

EI *Editor's Note: From time to time, JDEtiPS has run articles about technical procedures that require or recommend copying an Enterprise One® environment as a step along the way. Well, don't you think it's about time we walked you through that process in detail? We thought so, too, and Dwight Paul has provided just the thing. This article will show and tell you just how to approach this, guide you around some holes, and let you know how to tell if it worked. It even gives some tips on how long you can expect some of the steps to take. Now that's just down-right friendly! Don't you wish all documentation did that?*

Never underestimate the value of having replicated environments for accurate testing before you put an ESU or a custom code change into production. Replicated environments can also be valuable if your production objects are corrupted or inadvertently damaged or an attempt to restore from backup has failed. For the process to be accurate, there are several key steps that must be completed to ensure a successful environment copy. For demonstration purposes, let's assume we are copying Production (PD7334) to Development (DV7334).

Here are the primary events. Each one is explained below in detail and with screen shots.

1. Copy Central Objects
2. Copy Pathcode Files on the Deployment server
3. F983051 Table Update

4. Object Librarian Detail Copy (R989861)
5. Control Table Copy
6. Business Data Copy
7. Full Package Build for Target Environment

Copy Central Objects

When you copy central objects, you are copying all records in the central objects tables on the enterprise server. By default, the central objects database for production is JDE_PD7334. While you can use native database tools to manually copy tables between databases, EnterpriseOne has UBEs that will achieve the same result. R98403 will copy all tables from Central Objects – PD7334 to Central Objects – DV7334.

Replicated environments can be valuable if your production objects are corrupted... or an attempt to restore from backup has failed.

Here are some important things to keep in mind when you run R98403 to copy central objects between pathcodes:

1. All users should be logged out of the affected environments (in this example, PD7334 and DV7334) until the entire process has completed successfully.
2. R98403 must run LOCAL on the machine you are logged into.
3. Allow up to four hours for central objects to copy between pathcodes.

Running R98403

On a workstation, log into any valid environment as a CNC Administrator. In the fast path, type `bv` to go to batch versions.

In the Batch Application Field, type in R98403 and click on FIND (Figure 1).

Find version XJDE0019 (Figure 2).

On the preferences menu, select EXIT BAR to see the FORM and ROW menus. Highlight the version XJDE0019. In the exit/row menu, select the processing options button. This will allow you to select the source and target environments.

For processing options, modify the settings for Environment tab as shown here. The update tab settings are shown in Figure 3. The print and licensing tabs do not require any modifications.

NOTE: BE SURE YOU CHOOSE THE CORRECT SOURCE AND TARGET DATA SOURCES.

The wording of the processing options often confuses users as to which field designates the target and

which field designates the source. Processing option 2 is the TARGET environment and processing option 4 is the SOURCE environment.

****NOTE-** Some CNC Administrators prefer to make copies of standard JDE versions when users opt to change the default processing

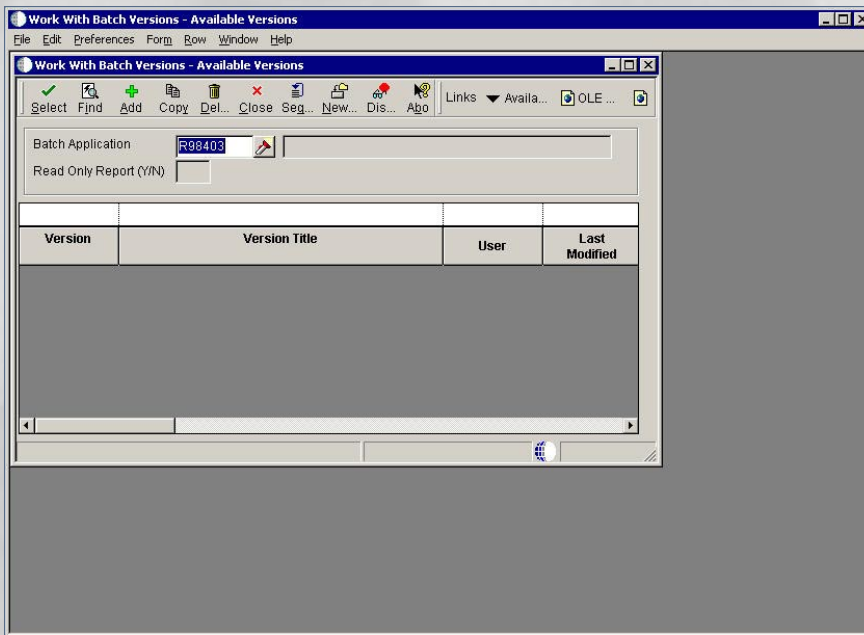


Figure 1 – Batch Versions Application

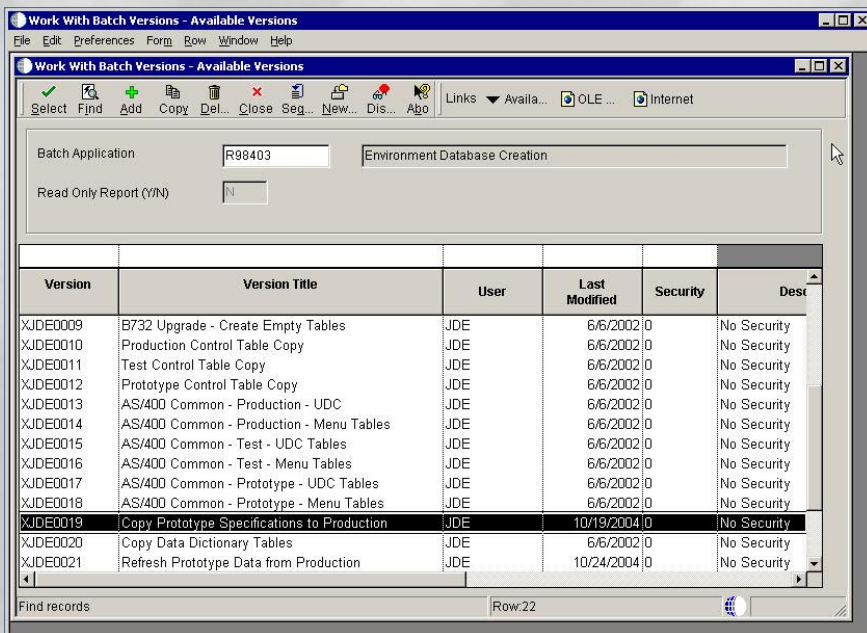


Figure 2 – Batch Versions Application (R98403 | XJDE0019)

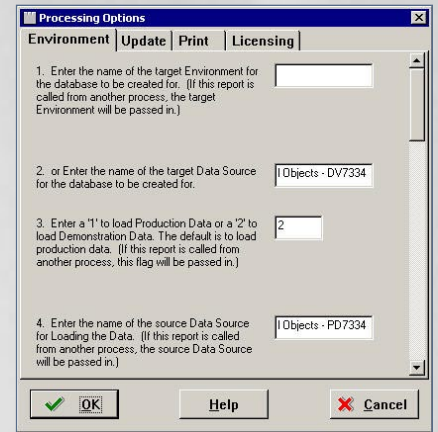


Figure 3 – Processing Options for R98403 | XJDE0019

options. This example shows an existing version where the processing options are being modified. Either way will achieve the same result.

It is possible that each of the recommended steps for copying an environment, will complete without errors, only to find that when you log into the newly copied environment, you are missing QBE fields or you are unable to search records, etc. This is an instant indication that the central objects copy was not completely successful.

For the Update tab (Figure 4), processing option 7 is shown as A. This will drop tables in the target environment and recreate them. I prefer this option to reduce the chance that records copied between tables either fail or are not complete. The alternative is to leave the processing option blank. This will not drop the existing tables. It drops the records in each table and copies in the new records.

When you are ready run the report, remember to select the Advanced button and check the box to override location (Figures 5 and 6). This will allow you to select to run the report LOCAL.

This Article Continues...

Subscribers, log in from our main search page to access the full article:

www.JDEtips.com/MyAccess.html

Not a Subscriber? Gain access to our full library of JDE topics:

www.JDEtips.com/JD-Edwards-Library

Visit www.JDEtips.com for information on the JDEtips University schedule, private training and consulting, and our Knowledge Express Document Library.

License Information: The use of JDE is granted to JDEtips, Inc. by permission from J.D. Edwards World Source Company. The information on this website and in our publications is the copyrighted work of JDEtips, Inc. and is owned by JDEtips, Inc.

NO WARRANTY: This documentation is delivered as is, and JDEtips, Inc. makes no warranty as to its accuracy or use. Any use of this documentation is at the risk of the user. Although we make every good faith effort to ensure accuracy, this document may include technical or other inaccuracies or typographical errors. JDEtips, Inc. reserves the right to make changes without prior notice.

Oracle and J.D. Edwards EnterpriseOne and World are trademarks or registered trademarks of Oracle Corporation. All other trademarks and product names are the property of their respective owners.

Copyright © by JDEtips, Inc.