

Inserting a Chart in Crystal Reports

By Adam Crigger, Preferred Strategies

Editor's note: Adam's company is one of the leading JDE®/Crystal Reports practices in North America. Adam's consultants not only know Crystal, but they are all JDE experts as well. For more information on how Crystal Reports can benefit your JDE implementation with an easier to use and powerful reporting tool, go to www.JDETips.com/CrystalReports.asp.

Let's start with a report we've written in Crystal against the JDE database that has totals for Requested and Approved Budgets.

In order to graphically show the comparison between the Requested and Approved Budgets by Company, follow the next steps.

Crystal Reports

can benefit your


JDE implementation

with an easier to

use and powerful

reporting tool.

1st Step:

- Look at report output (see figure 1)
- Click on the "Insert Chart" icon or choose "Chart" from the insert menu 
- A "Chart Expert" window will appear

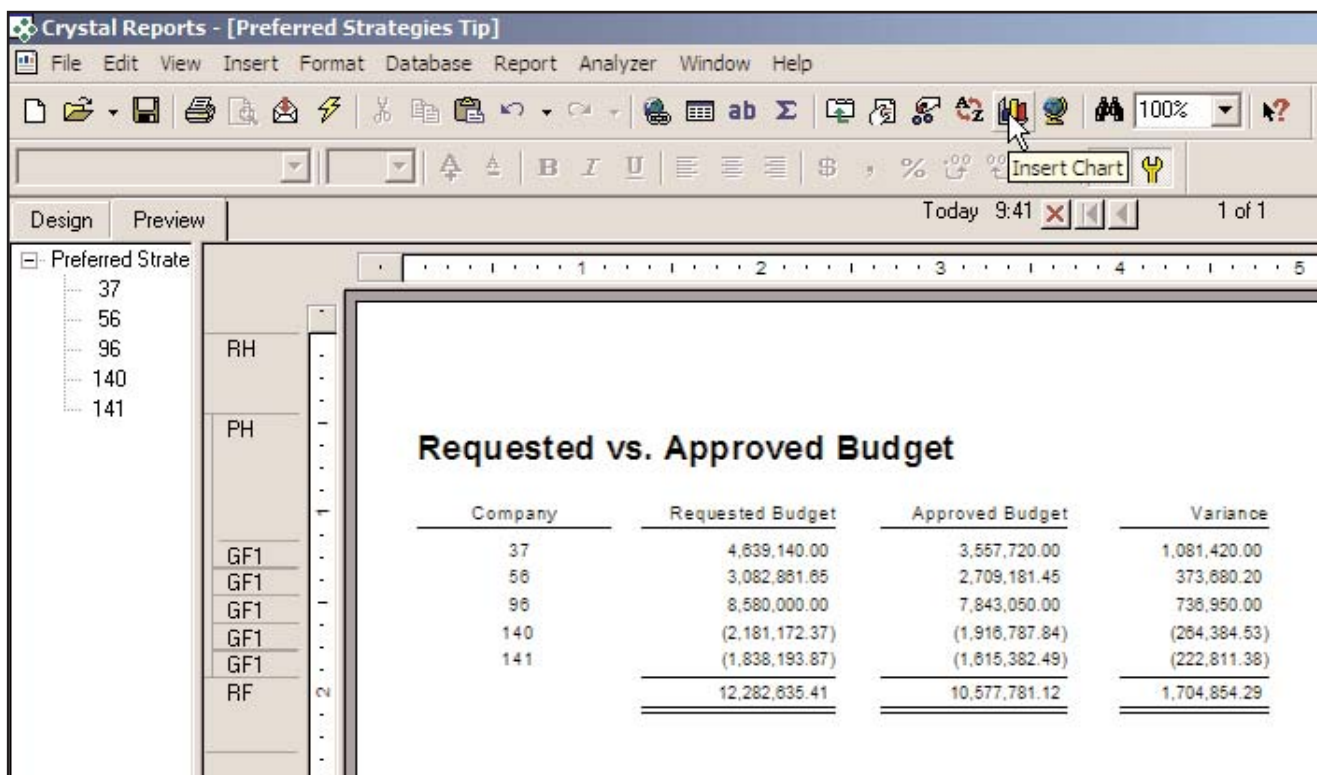


Figure 1: Report Without a Chart

2nd Step:

- At the "Chart Expert" window, select the chart type in the [Type] tab (see figure 2)

For purposes of this report, we selected the Bar chart type

3rd Step:

- Once the chart is selected (see figure 3) choose the [Date] tab.
- In the [Data] tab, select the [Advanced] button on the left.

An Advanced chart allows you to graph data in the details section while a Group chart allows you to graph summary information already existing in group headers and footers.

When you place the chart in the report, it must be in a section at least one level higher than the data used in the chart.

Since we are reporting on Group #1 – Company subtotals, we will leave the Place chart dropdown to "Once per report" and the "Header" radio button checked to display the chart in the Report Header.

4th Step:

- Select the @ Company so it falls within the "On change of" on the right, and select the @ company field from the list (see figure 4).
- Select the summaries for Requested and Approved budgets for the "Show Value(s)" section.

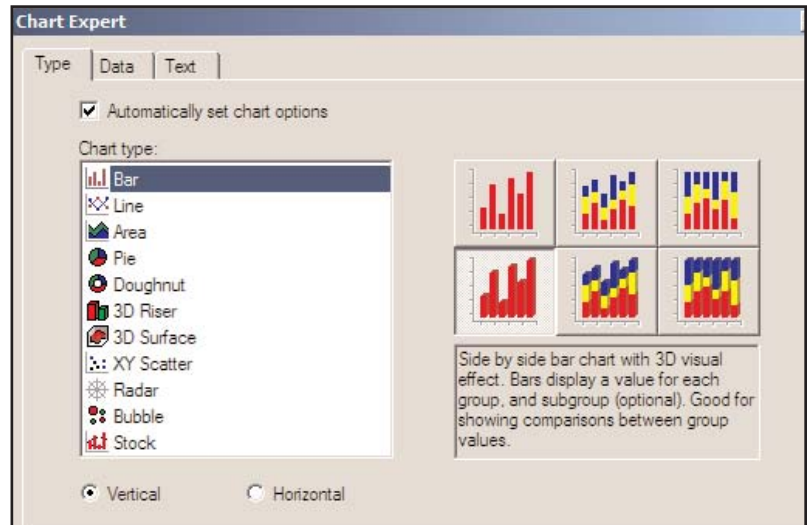


Figure 2: Chart Type tab

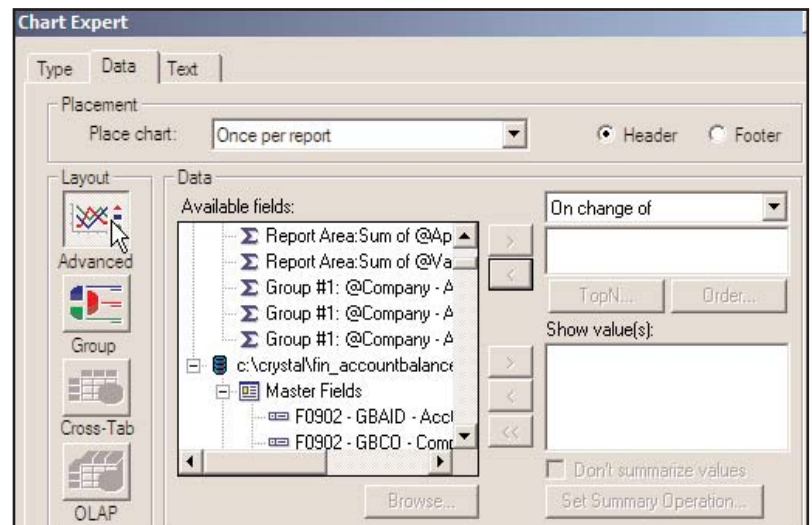


Figure 3: Data tab

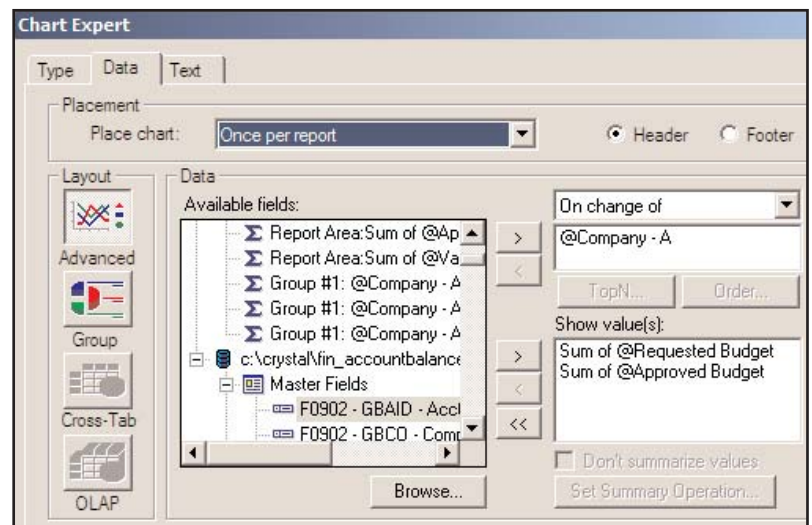


Figure 4: Placement

This Article Continues...

Subscribers, log in from our main search page to access the full article:

www.JDEtips.com/MyAccess.html

Not a Subscriber? Gain access to our full library of JDE topics:

www.JDEtips.com/JD-Edwards-Library

Visit www.JDEtips.com for information on the JDEtips University schedule, private training and consulting, and our Knowledge Express Document Library.

License Information: The use of JDE is granted to JDEtips, Inc. by permission from J.D. Edwards World Source Company. The information on this website and in our publications is the copyrighted work of JDEtips, Inc. and is owned by JDEtips, Inc.

NO WARRANTY: This documentation is delivered as is, and JDEtips, Inc. makes no warranty as to its accuracy or use. Any use of this documentation is at the risk of the user. Although we make every good faith effort to ensure accuracy, this document may include technical or other inaccuracies or typographical errors. JDEtips, Inc. reserves the right to make changes without prior notice.

Oracle and J.D. Edwards EnterpriseOne and World are trademarks or registered trademarks of Oracle Corporation. All other trademarks and product names are the property of their respective owners.

Copyright © by JDEtips, Inc.