

Security: Securing PDF Files From Un-Authorized Viewing

By Dwight A. Paul, III

EI *Editor's Note: We must admit to some trepidation when faced with an article that points out exactly how to get around EnterpriseOne® security to view reports that we oughtn't. But somehow, presenting the solution without a full description of the problem just didn't work for us either, so here's your opportunity to learn how to be naughty. Just please do read the rest of the article! If you are not a CNC, be sure your CNC knows about this article. The job you save could be your own!*

Typically, most EnterpriseOne end users view their UBEs by using the submitted jobs application (P986116). End users are often unaware that after they have processed and viewed their UBE, it remains in the printqueue directory on the machine where it was processed—unless the CNC Administrator has an enforced policy for deleting old reports, or automates report deletion.

Most CNC administrators have secured the submitted jobs application so that users can only view their own reports. However, there is a way for users to bypass submitted jobs and view all PDF Files. This is through the View/User Options menu. The button for View Local Output will open the printqueue folder on the Local machine using Windows Explorer. Depending on the security of the network, it is then possible for the user to browse files, folders, and other shared drives. If your EnterpriseOne installation is composed of Citrix servers with multiple companies and multiple users on each server, it is possible for users to view UBEs that may contain sensitive financial, human resources, and payroll data.



Figure 1 – Main Menu

It goes without saying that unauthorized viewing of sensitive data can have severe negative consequences on work environments and could also be the basis of an employee or government body taking legal action against your company. This document will outline the steps necessary for securing the View Local Output button.

Locating the Application

After you log into EnterpriseOne, go to the top row of menus and select View (Figure 1).

From the View drop down menu select user options. This will bring up the application P0085 (Figure 2).

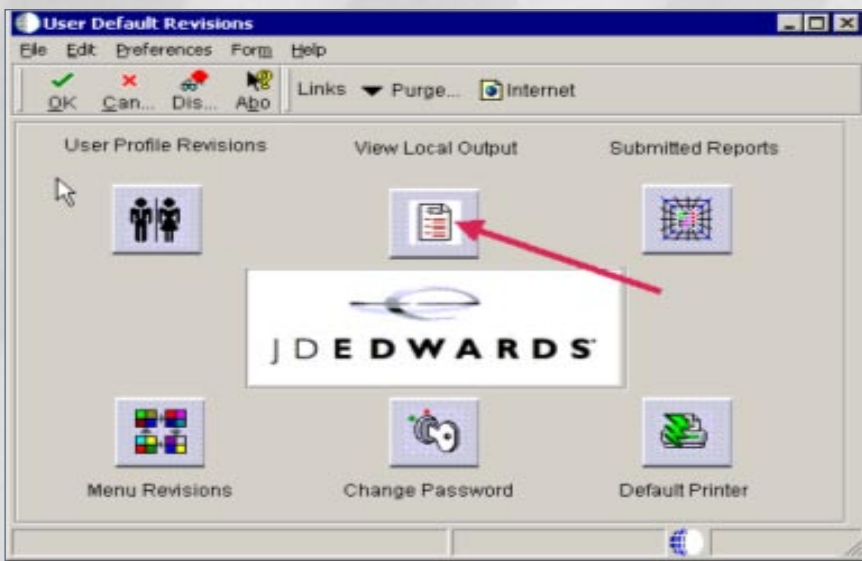


Figure 2 – View/User Options (P0085)

***Using About will show you the application name and form.*

When you select View Local Output, this will open the local print-queue folder (Figure 3).

Securing the Application

There are two applications on the View/User Options menu that require application event rules to be modified so that users cannot view PDF files of other users. These applications are P0085 and P986116.

P0085

View User Output button starts the application P0085. View User Output is the only selection that is not an EnterpriseOne application. Clicking the button launches Windows Explorer and goes directly to the B7/Printqueue folder. Therefore, there is no way to secure it using Security Workbench (P00950). If you secure P0085, each of the applications shown in Figure 2 will be inaccessible. The most important of these is the Change Password application. Users without access to this application would be contacting the CNC administrator each time they were required to change their password. The solution to this problem should include a way to disable View User Output without prohibiting access to the other applications that are served up by P0085.

****For Payroll users who retrieve direct deposit files using View User Output application, see the special notes section at the end of the document for additional instructions.*

Modifying P0085

The best solution for securing View User Output is to modify the application code of P0085 using OMW. Here are the steps we will follow:

1. Use Design Tools to modify Event Rules for P0085.

2. Promote changes through all pathcodes.

3. Build an update package/use check-out to distribute the application.

Using Design Tools

In keeping with best practices with change management, it is recommended that you start in the development environment. First, the program will be modified, tested, and promoted—before it is distributed to all workstations. This application does not run on the server, so it does not require a server package build.

1. To modify P0085 using Forms Design Aid, start by logging into DV7334 and opening OMW.

2. Create a new project and make sure it is at status 21.

3. Make sure you are added to your new project with the authority to use design tools.

4. In your project, highlight P0085 and select check out.

5. Next, highlight the object and select the Design Button (Figure 4)

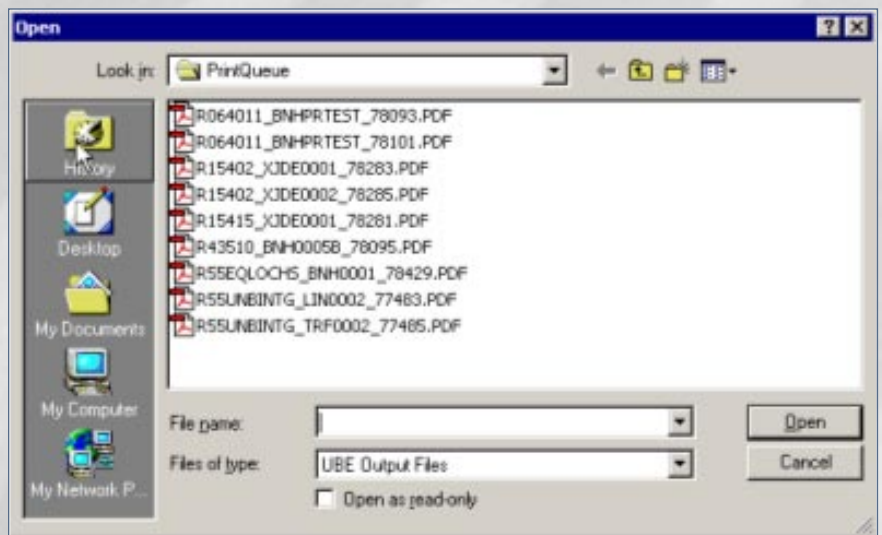


Figure 3 – Windows Explorer launched from View User Output

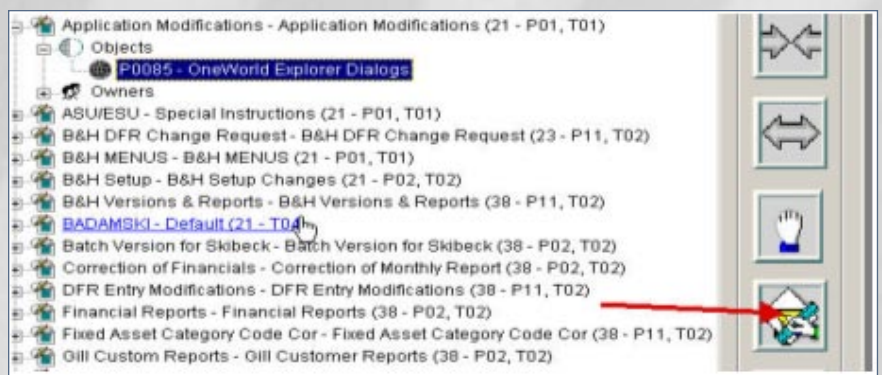


Figure 4 – OMW: Selecting Design

This Article Continues...

Subscribers, log in from our main search page to access the full article:

www.JDEtips.com/MyAccess.html

Not a Subscriber? Gain access to our full library of JDE topics:

www.JDEtips.com/JD-Edwards-Library

Visit www.JDEtips.com for information on the JDEtips University schedule, private training and consulting, and our Knowledge Express Document Library.

License Information: The use of JDE is granted to JDEtips, Inc. by permission from J.D. Edwards World Source Company. The information on this website and in our publications is the copyrighted work of JDEtips, Inc. and is owned by JDEtips, Inc.

NO WARRANTY: This documentation is delivered as is, and JDEtips, Inc. makes no warranty as to its accuracy or use. Any use of this documentation is at the risk of the user. Although we make every good faith effort to ensure accuracy, this document may include technical or other inaccuracies or typographical errors. JDEtips, Inc. reserves the right to make changes without prior notice.

Oracle and J.D. Edwards EnterpriseOne and World are trademarks or registered trademarks of Oracle Corporation. All other trademarks and product names are the property of their respective owners.

Copyright © by JDEtips, Inc.