



Report Design – Sorting by a Calculated Field

By Mike Wright, Werner Co.

Editor's Note: *What happens when you've been calculating values and putting them into variables and now you need to do a data sequencing sort on one of those fields? Is it possible to do so? Conventional wisdom would say, "No, you can only sort on fields from the current business view." Then again, who ever said JDETips was about conventional wisdom? Welcome back Mike Wright, who's here to share a technique that bucks any thoughts of "can't do that." (would you expect anything less?)*

If you are familiar with reports or UBEs, then you know that you can sort your reports by using data sequencing. However, you can only sort on fields that are in the business view being used. You may have times when you are calculating values based on these fields and putting them into variables – so what do you do if you want to sort on one of those fields? Let me take you through one technique to handle this kind of sorting.

For our example, let's use the Work Order Master table (F4801) to keep it simple. We want to create a report with the work order number, start date, completion date, and the days between the start date and completion date. When the report comes out, we would like to have it sorted by the number of days it took to complete the work order.

The first thing you want to do is create a work table to use. Create it with the fields you want from your business view, plus any calculated fields you might want to sort on or use data selection on. In our situation, we will create a work table with the following data items: DOCO, STRT, STRX and MATH01. I picked MATH01 for the calculated field because it's generic. You can use that for a calculation, look for a different existing data item, or create your own.

Let's take a quick look at creating this table. After clicking Add in OMW and selecting table, you will see a screen similar to Figure 1.



Report Design – Sorting by a Calculated Field

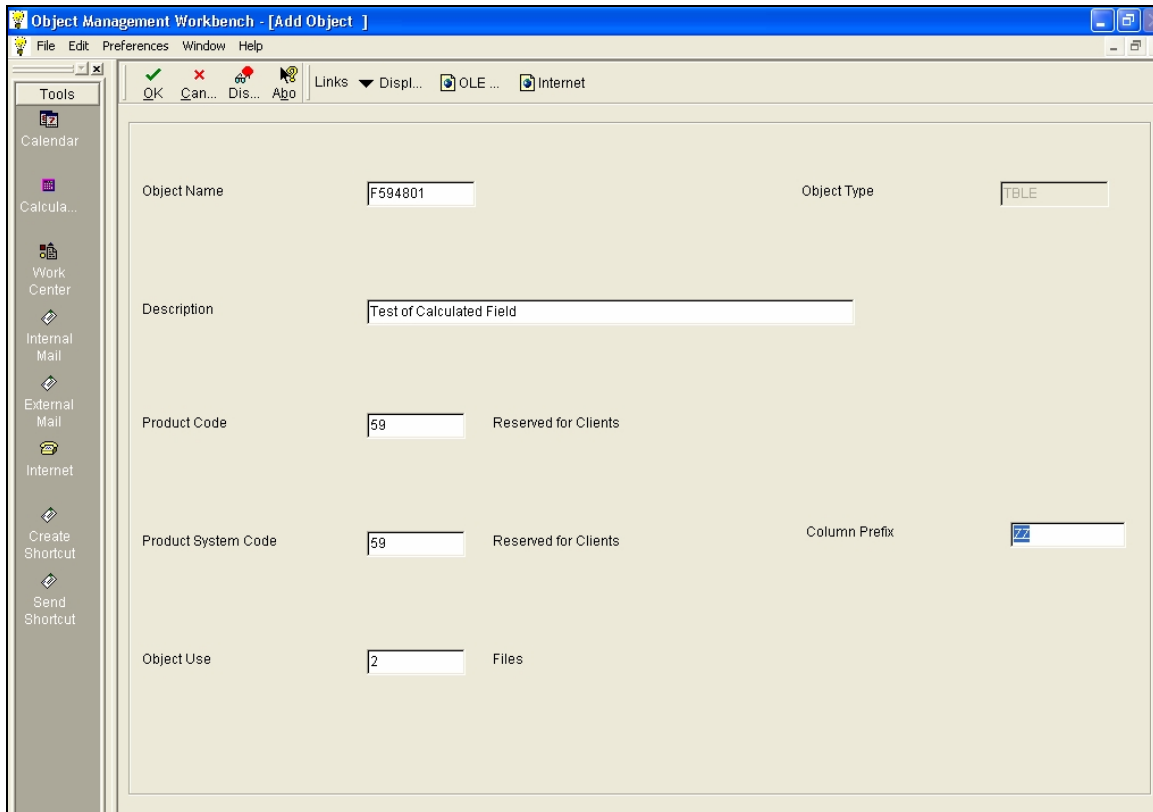


Figure 1 – Add Table

As you can see in Figure 1, I've used a Product System code between 55 and 59. It is important to use these system codes because they have been reserved for custom work and will not be touched by upgrades or electronic fixes. The other information is up to you depending on what your table is.

Once you get through that screen, go into Table Design and, when you have added the fields and created an index, you will see something similar to Figure 2.

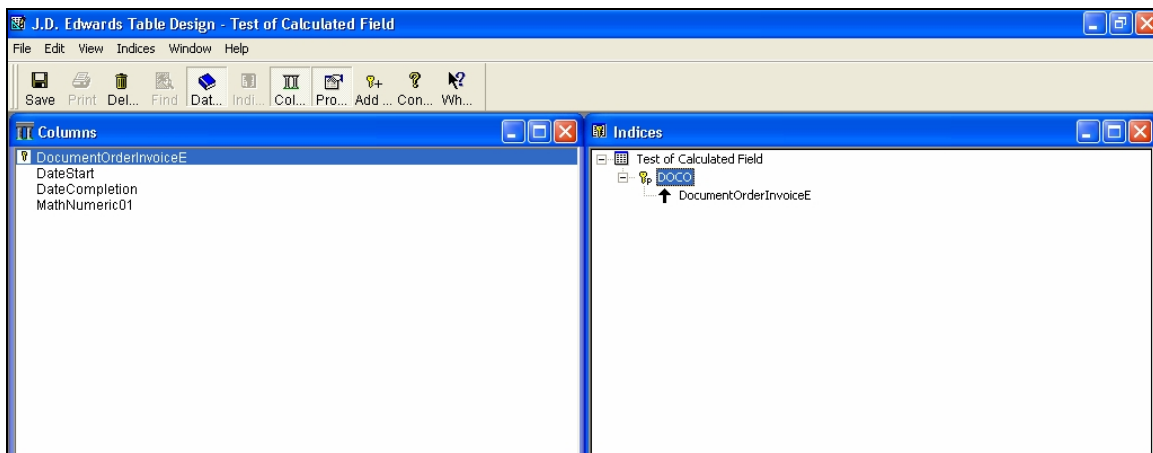


Figure 2 – Table Design Aid

This Article Continues...

Subscribers, log in from our main search page to access the full article:

www.JDEtips.com/MyAccess.html

Not a Subscriber? Gain access to our full library of JDE topics:

www.JDEtips.com/JD-Edwards-Library

Visit www.JDEtips.com for information on the JDEtips University schedule, private training and consulting, and our Knowledge Express Document Library.

License Information: The use of JDE is granted to JDEtips, Inc. by permission from J.D. Edwards World Source Company. The information on this website and in our publications is the copyrighted work of JDEtips, Inc. and is owned by JDEtips, Inc.

NO WARRANTY: This documentation is delivered as is, and JDEtips, Inc. makes no warranty as to its accuracy or use. Any use of this documentation is at the risk of the user. Although we make every good faith effort to ensure accuracy, this document may include technical or other inaccuracies or typographical errors. JDEtips, Inc. reserves the right to make changes without prior notice.

Oracle and J.D. Edwards EnterpriseOne and World are trademarks or registered trademarks of Oracle Corporation. All other trademarks and product names are the property of their respective owners.

Copyright © by JDEtips, Inc.