

Using the EnterpriseOne Job Scheduler – Part 2

By Mike Wright, Werner Co.

E1 Editor's Note: *In the July/August 2004 issue of JDEtips, Mike Wright offered the following challenge: "There are still a number of companies who under-utilize the EnterpriseOne job Scheduler or do not use it at all. That's a shame because this is a very powerful tool that is built into the software. With only a couple of exceptions, most of your scheduling needs can be met by this job Scheduler." In that White Paper, Mike covered the basics of setup, adding entries, and keeping the tables clean. In this second installation, he gives us some security considerations in addition to some valuable tips for making this powerful tool work better for you.*

Introduction

Part 1 covered the basic setup of the EnterpriseOne Job Scheduler, adding entries and keeping the Scheduler tables cleaned. Part 2 discusses the following topics:

- Setting up additional Enterprise Servers
- Securing the default user
- Troubleshooting problems
- Scheduler tips and suggestions

Setting up additional Enterprise Servers

If you went through the steps in Part 1, you already should have a Scheduler Server set up on your main Enterprise Server (possibly your only Enterprise Server). This works great for one Enterprise Server, but if you have additional Enterprise Servers, you will be able to schedule jobs only for the path codes that exist on the first Enterprise Server. For example, if you just have production objects on your first Enterprise Server, then you will not be able to schedule jobs for Prototype or Development. To solve this problem, we will create another instance of the Scheduler Server on each additional Enterprise Server that we want the Scheduler to run on.

The first obstacle you have to overcome is the Scheduler tables. They exist in your system data source and are F91300, F91310 and F91320. Create these tables empty in another data source. Do this by going to Object Management Workbench (OMW) and generating each of the tables to a different data source other than the System data source. Figure 1 shows the Table Operations tab.

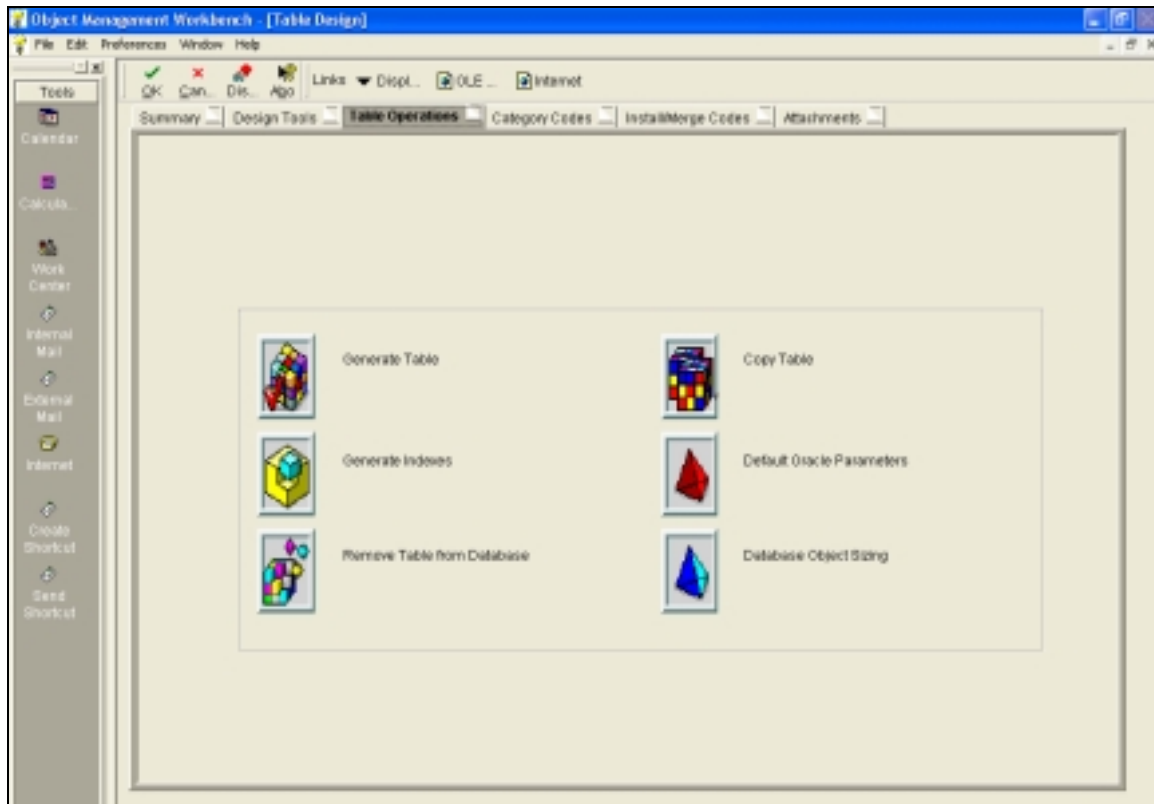


Figure 1 - Table Operations tab

Click the Generate Table button to see the screen in Figure 2.

This Article Continues...

Subscribers, log in from our main search page to access the full article:

www.JDEtips.com/MyAccess.html

Not a Subscriber? Gain access to our full library of JDE topics:

www.JDEtips.com/JD-Edwards-Library

Visit www.JDEtips.com for information on the JDEtips University schedule, private training and consulting, and our Knowledge Express Document Library.

License Information: The use of JDE is granted to JDEtips, Inc. by permission from J.D. Edwards World Source Company. The information on this website and in our publications is the copyrighted work of JDEtips, Inc. and is owned by JDEtips, Inc.

NO WARRANTY: This documentation is delivered as is, and JDEtips, Inc. makes no warranty as to its accuracy or use. Any use of this documentation is at the risk of the user. Although we make every good faith effort to ensure accuracy, this document may include technical or other inaccuracies or typographical errors. JDEtips, Inc. reserves the right to make changes without prior notice.

Oracle and J.D. Edwards EnterpriseOne and World are trademarks or registered trademarks of Oracle Corporation. All other trademarks and product names are the property of their respective owners.

Copyright © by JDEtips, Inc.