

Version Security in OneWorld®

By Alex Rippingale, Q Software International Ltd.

Introduction

This document is designed to show users of JD Edwards® (JDE®) how to protect their versions from misuse. JDE provides two types of security specifically to deal with the protection of versions from users, but they are not sufficient to ensure that all sites have the flexibility to use JDE in a structured and secure manner.

In this White Paper are also a number of other ways of protecting versions using other inherent security features in JDE. These techniques and methods have all been incorporated into this central resource so that users of JDE are made aware of the options and can choose the approach that best suits their needs.

There is no quick answer to Version security and in many cases a mixture of techniques is required to achieve the best results. Ideally knowing all the possibilities and streamlining your approach from implementation will vastly reduce the set up and maintenance overheads involved, and, hopefully, this paper will help those of you who already have developed a strategy to optimise that strategy.

Processing Option Security

Processing Option security exists as part of the JDE Security Workbench as Security Type 5. This type of security is specifically designed so that when a user right-clicks on an application from a menu, the options that are available can be limited for each user or user group.

Processing Options can be secured, which is vital if you want to stop users from changing how versions behave. Data Selection can change what output a UBE produces and although generally not dangerous if a user has access to that application, you may have set up your versions so their output is tailored to your needs; thus you may want to restrict Data Selections for selected versions.

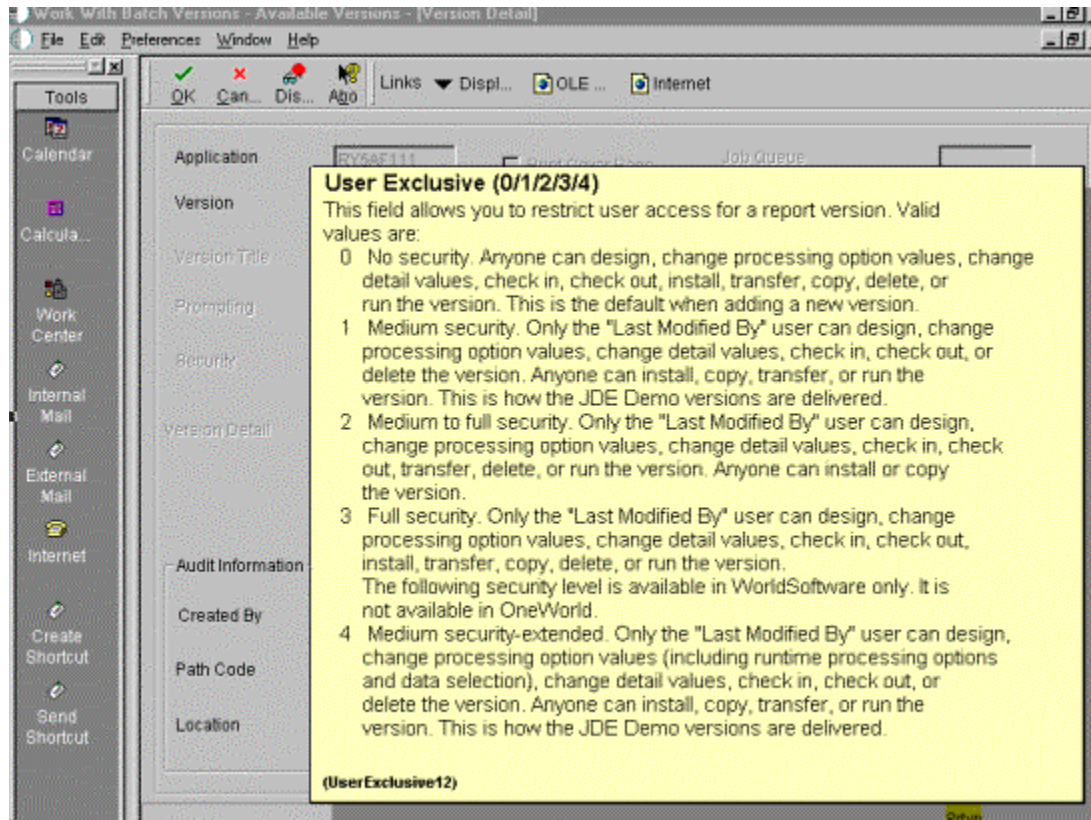
Prompt for Versions will call either the Interactive (P983051) or Batch (P98305) Versions List from which your users can select the desired version. This method is designed to reduce the amount of menu set up required but does open you up to further security risks.

Although Processing Option security is an enhancement from World security, it is still not sufficient to allow users to protect individual versions. Processing Option security only applies at

the application level, so either all of the versions for an application can be secured or none, and this means that different versions of the same program cannot be secured using this type of security.

Version Security (User Exclusive Lock)

Version Security or User Exclusive Lock Security is not part of the JDE security workbench and is a legacy from WorldSoftware™. It is designed to allow you to protect your individual versions, either from a menu or from the Version Lists. Different levels are available to stop users from modifying the standard JDE versions and any custom versions that you need to create. The screen shot below explains what each level does:



This type of security is effective at stopping users from modifying any custom or JDE versions, but it is relatively inflexible when used alone and potentially dangerous if users have access to either of the Version Lists. Users can gain access to a Version List by using Fast Path, Menu access, or by Prompting for Versions.

- 0. Any user can do anything with a version with this level of security, including run it. This means that any versions that have a level of 0 against them must be authorized to change, run, delete, etc. At a mature live site that has not been on top of this problem from the start, many potential holes may exist.
- 1. Any user can run versions with this level of security. This level would be sufficient to stop users from modifying existing versions, as this is the level that JDE versions are shipped. All users can copy versions at this level and create their own. This means that if sensitive versions are accessible to users, then they can create their own, which can then be modified to behave in an unauthorised manner.

This Article Continues...

Subscribers, log in from our main search page to access the full article:

www.JDEtips.com/MyAccess.html

Not a Subscriber? Gain access to our full library of JDE topics:

www.JDEtips.com/JD-Edwards-Library

Visit www.JDEtips.com for information on the JDEtips University schedule, private training and consulting, and our Knowledge Express Document Library.

License Information: The use of JDE is granted to JDEtips, Inc. by permission from J.D. Edwards World Source Company. The information on this website and in our publications is the copyrighted work of JDEtips, Inc. and is owned by JDEtips, Inc.

NO WARRANTY: This documentation is delivered as is, and JDEtips, Inc. makes no warranty as to its accuracy or use. Any use of this documentation is at the risk of the user. Although we make every good faith effort to ensure accuracy, this document may include technical or other inaccuracies or typographical errors. JDEtips, Inc. reserves the right to make changes without prior notice.

Oracle and J.D. Edwards EnterpriseOne and World are trademarks or registered trademarks of Oracle Corporation. All other trademarks and product names are the property of their respective owners.

Copyright © by JDEtips, Inc.