

December 2013

Technical/
Customizing EnterpriseOne

Running the Local Web in Any Environment

By Eric Frye

Editor's Note: Do JDE developers listen to *NSYNC in their ear buds while working? Does that help them keep all their development and test environments in sync? With or without the ear buds, this article can help sort out how to make this work. Step by step instructions, screen shots, and code help you through this tip for simplifying switching your local web to match the environment you will be signing into.

Running the local web is an invaluable tool in E1 development and troubleshooting. It allows developers to run HTML code based on the local environment specs of the JDE developer's workstation, rather than on the server. This is a required function for unit testing enhancements and bug fixes in the DV910 environment

I'm going to be discussing a little trick that we use to simplify switching the local web to match the environment that we will be signing into. It involves creating master copies of the jas.ini and jdbj.ini for each environment, and running a batch file to copy them to your JDE development workstation as needed.

Here are the two most common reasons that these can get out of sync:

1. Let's say, for instance, a new PY full package has been deployed to your JDE development workstation. Once the PY full package has been installed on the client, the jdbj.ini and jas.ini files will point to PY910 datasources. If you then sign into DV910 to run the DV local web (figures 1-2), you will get a prompt to select either PY910 or JPY910 (figure 3). If you continue beyond this point and proceed to run the local web, your web environment will be pointing to PY datasources when technically you're signed into DV. This will inevitably cause problems testing locally.

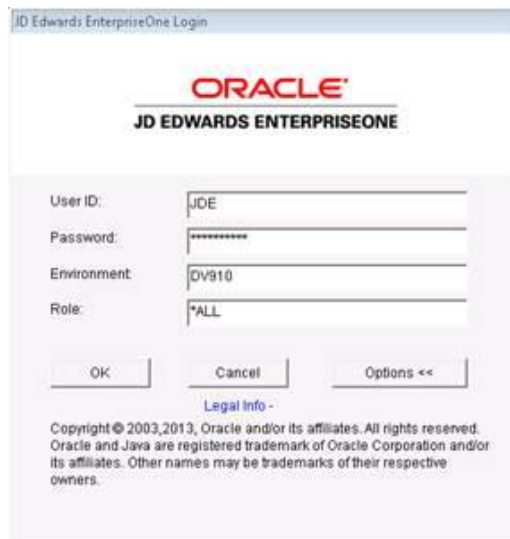


Figure 1: Login screen for the DV910 fat client

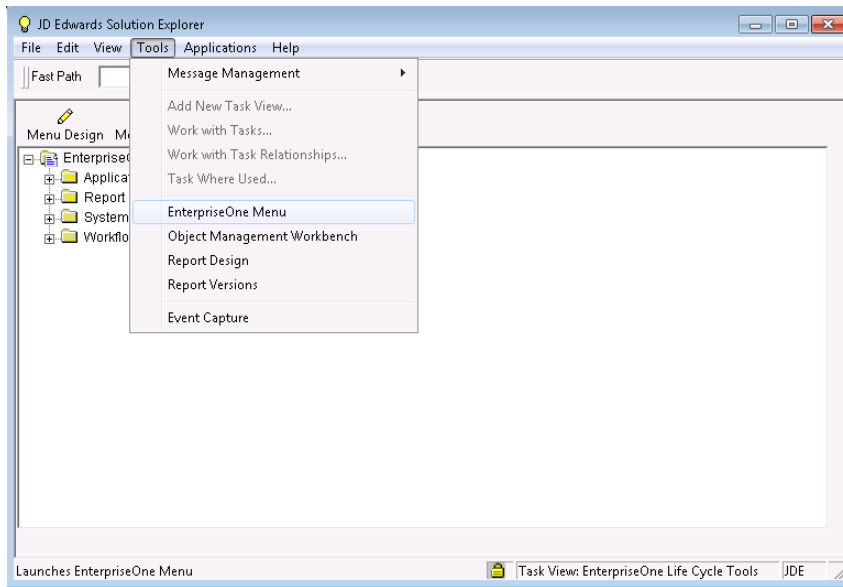


Figure 2: From the Tools menu, select EnterpriseOne Menu to run local web

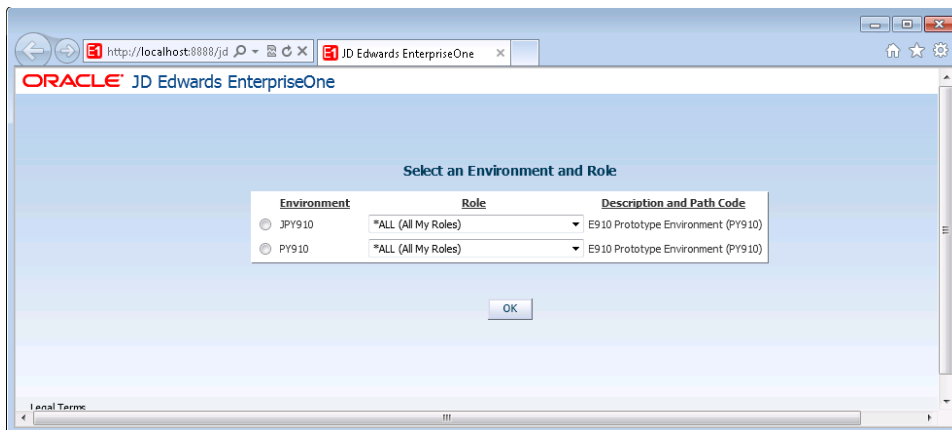


Figure 3: Prompted to select JPY910/PY910 even though user has signed into DV910

2. You may also be in a situation where you need to run the local web in an environment other than DV910. Perhaps there's an error on a form in production that cannot be recreated in another environment. One of the first steps in troubleshooting would be to see if the problem can be recreated in another JPD910 instance. If you are able to recreate the problem on the PD910 local web, then your problem isn't isolated to the web server. Signing into PD910 on the local web will also allow developers and CNC to step thru the code with the debugging tool if necessary.

Fortunately, there is an easy script that developers and CNC can use to run the local web in any environment installed on the JDE development workstation. It can be run after installing a full client package, or at any time you want to run the local web for any environment in your company's JDE install. The setup is simple:

1. Create master copies of the jas.ini and jdbj.ini
2. Create a WebDev\ini folder to store off master copies of jas.ini/jdbj.ini for each environment.

This Article Continues...

Subscribers, log in from our main search page to access the full article:

www.JDEtips.com/MyAccess.html

Not a Subscriber? Gain access to our full library of JDE topics:

www.JDEtips.com/JD-Edwards-Library

Visit www.JDEtips.com for information on the JDEtips University schedule, private training and consulting, and our Knowledge Express Document Library.

License Information: The use of JDE is granted to JDEtips, Inc. by permission from J.D. Edwards World Source Company. The information on this website and in our publications is the copyrighted work of JDEtips, Inc. and is owned by JDEtips, Inc.

NO WARRANTY: This documentation is delivered as is, and JDEtips, Inc. makes no warranty as to its accuracy or use. Any use of this documentation is at the risk of the user. Although we make every good faith effort to ensure accuracy, this document may include technical or other inaccuracies or typographical errors. JDEtips, Inc. reserves the right to make changes without prior notice.

Oracle and J.D. Edwards EnterpriseOne and World are trademarks or registered trademarks of Oracle Corporation. All other trademarks and product names are the property of their respective owners.

Copyright © by JDEtips, Inc.