



Converting Work Order Type

By Thomas Ricci

Editor's Note: The mechanics seem pretty straightforward on this conversion process, but it still takes a team to go from start to finish. So be sure to include this step and the resources in your upgrade implementation plans. This article provides guidelines for choosing the team, and tips and gotchas to make it come out right in the end.

Often enough I get asked if work orders from a previous version can be converted to the new work order type.

The process is described as a post install or activity of JD Edwards E1 by using the UBE R48803 for existing orders.

In EnterpriseOne 8.9 and higher, it is a requirement that all the Work Order Types be unique.

This setup is made in the Document Type Maintenance P40040 (See Figure 1).

The order type WO needs to be set to 02 (Manufacturing Work Order) and/or the document type WM gets set up as 04 (Equipment Work Order). The order types are hard coded in UDC table 48/OT and the value is assigned to each unique user-defined work order doc. In the past the system used the F40039; now all document types, including manufacturing, need to be in this table.

Go to 40040 or Document Type revisions and ensure the setup is correct to meet the requirements.

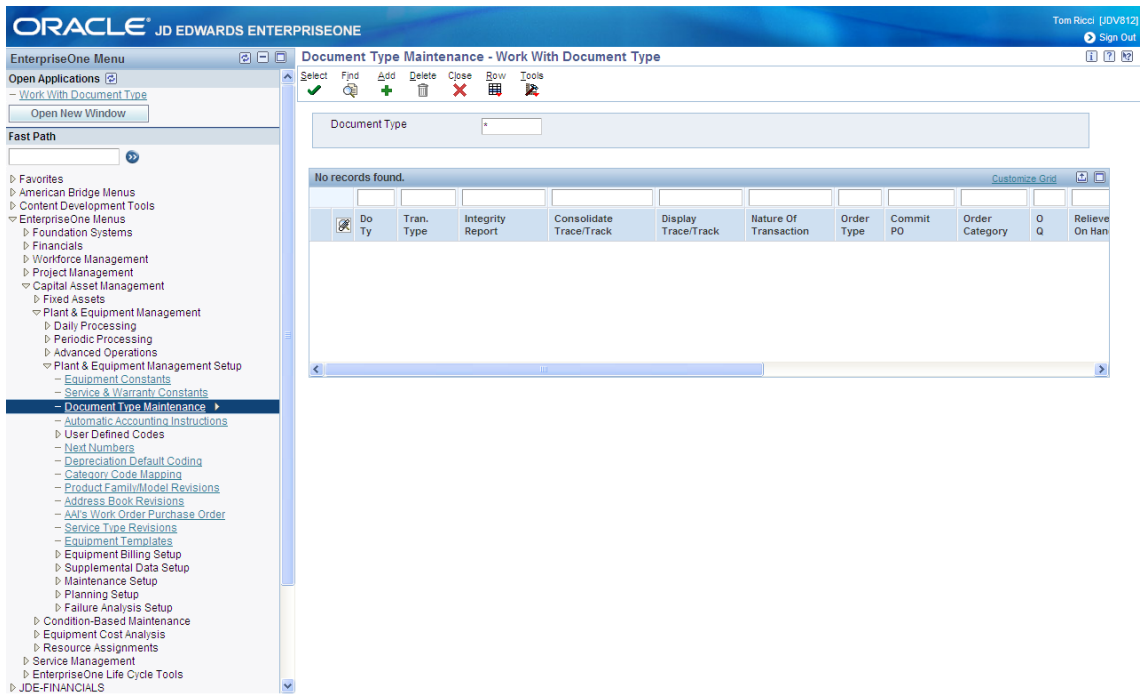


Figure 1: Document Type Setup

An additional setup will be required in the Work Order Activity Rules P4826, so activity rules need to be created for this order type (Figure 2). It is always recommended that a review of the process of the work order activity is planned and executed with documented workflows and approvals by the users, supervisors, and process owners.

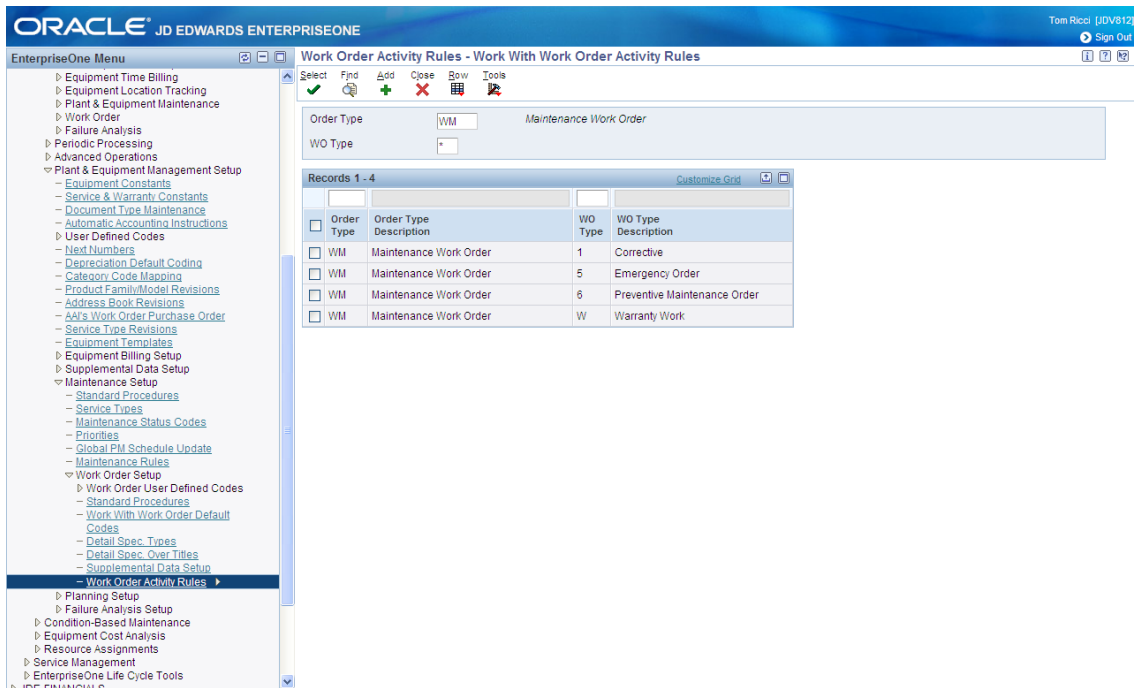


Figure 2: Work Order Activity Rules

This Article Continues...

Subscribers, log in from our main search page to access the full article:

www.JDEtips.com/MyAccess.html

Not a Subscriber? Gain access to our full library of JDE topics:

www.JDEtips.com/JD-Edwards-Library

Visit www.JDEtips.com for information on the JDEtips University schedule, private training and consulting, and our Knowledge Express Document Library.

License Information: The use of JDE is granted to JDEtips, Inc. by permission from J.D. Edwards World Source Company. The information on this website and in our publications is the copyrighted work of JDEtips, Inc. and is owned by JDEtips, Inc.

NO WARRANTY: This documentation is delivered as is, and JDEtips, Inc. makes no warranty as to its accuracy or use. Any use of this documentation is at the risk of the user. Although we make every good faith effort to ensure accuracy, this document may include technical or other inaccuracies or typographical errors. JDEtips, Inc. reserves the right to make changes without prior notice.

Oracle and J.D. Edwards EnterpriseOne and World are trademarks or registered trademarks of Oracle Corporation. All other trademarks and product names are the property of their respective owners.

Copyright © by JDEtips, Inc.