

EnterpriseOne® Work with Submitted Jobs Shortcut

By Mike Wright

E1 Editor Notes: *It's time to cut out the middleman and get down to business faster in P986116—also known as Work with Submitted Jobs. In this article, Mike shares how to create an application that bypasses the “pick server” prompt screen that appears each time you run Work with Submitted Jobs. Put this custom application on your menus, and your users will be automatically directed to the correct server for their job.*

When you run P986116 (often referred to as Work with Servers or Work with Submitted Jobs), you'll come across a screen that forces you to select a server. If you have users who get their submitted jobs from only one server, this can become confusing as they then have to decide which server to choose. Even if only one server is listed, it's still another screen to click through to run a job. In this article, I'll show you how to create an application that provides users with a shortcut to Work with Submitted Jobs and bypasses that selection screen altogether, eliminating both confusion as to what server to select and a repetitive step in the process.

Let's go through the steps to set up a front end application that will take the user directly to the submitted job application, without having to choose a server. This is similar to form exits found in some applications that have made it faster for users to navigate to a different function. In this case though, you will be able to put this new application on your menus in place of P986116.

The first thing we need to do is create a new processing option template; in this example, we'll name it T5598611. Figure 1 shows an example of the PO template.

The data item you'll use for the data source is DATP; it's a string size 30 that is commonly used for data source names in the system.

Once you have the processing option template created, create a new application to use this template. You will want to create this application from scratch and not use a copy. I created P5598611 for this part; you can name the template whatever you like. Remember to use system codes 55 through 59 for your application.

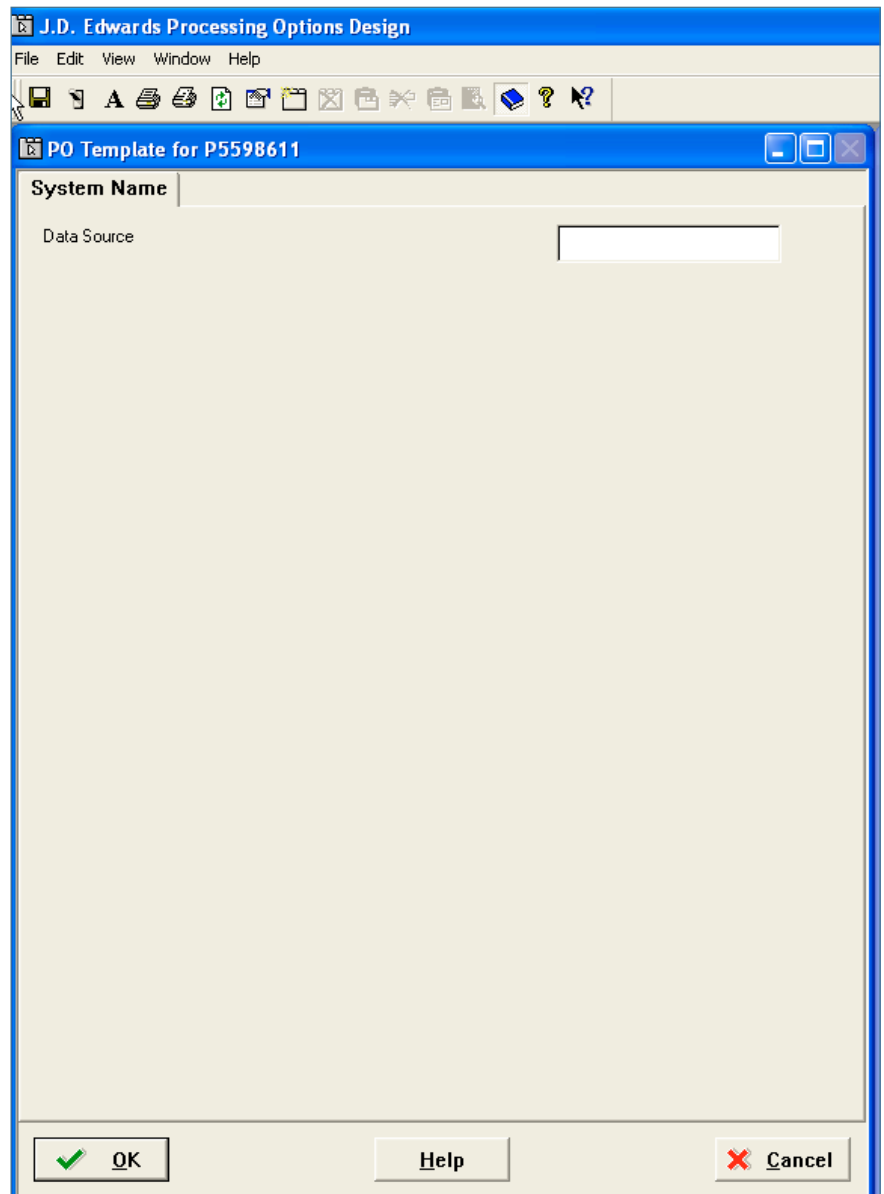


Figure 1: PO Template T5598611

For this application, you just need to have a Find/Browse form. Figure 2 shows the application Form Design Aid.

I attached V98611A and put some business view fields on the form. Keep in mind that this form will never be seen; therefore, you won't need to spend time working on its appearance. Attach the processing option template you created earlier to this application: Application.→ Select Processing Options.

The real key to all of this is the Event Rules for this form. In the "Dialog is Initialized" event, I added the code shown in Figure 3.

Business function B9861101 plays a key role in this process. If you look in your OCM mappings, F986110 is mapped to the system data source, but the real location of submitted jobs is found in your server map for the specific server on which you ran the job. This business function performs the data source override for this table. The first call you want to pass in is the data source found in your processing options. You can create a version for every server on which you want people to be able to view jobs and change each processing option to match that specific server.

You can create a version for every server on which you want people to be able to view jobs and change each processing option to match that specific server.

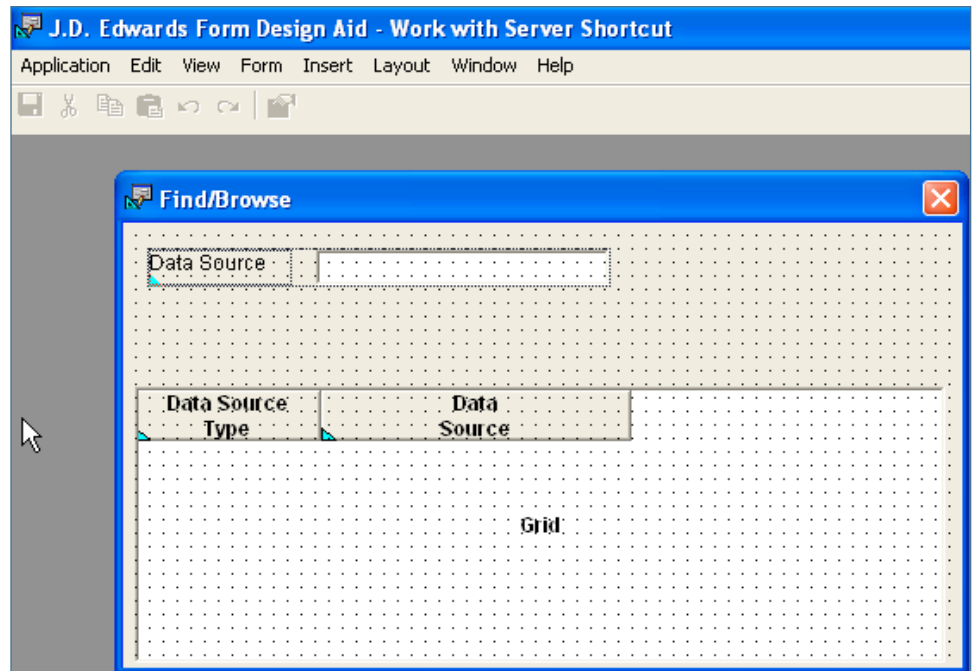


Figure 2: P5598611 Form

```
=====
FORM: Find/Browse [FIND BROWSE] (W5598611A)
=====
CONTROL: FORM
EVENT: Dialog is Initialized
-----
0001 F986110 DS OVERRIDE
      PO szDatabasePath -> szDatabasepath
0002 Call( App:P986110B , Form: W986110BA )
      PO szDatabasePath -> Executionhostname
      "<Blank>" -> cSecurityFlag
      "1" -> cMode
      "<Blank>" X Version
0003 F986110 DS OVERRIDE
      "<Blank>" -> szDatabasepath
0004 Press Button(HC &Close)
```

Figure 3: Application: Work with Server Shortcut (P5598611)

After the business function is called, interconnect the form to P986110B, the submitted job application. Again, you will pass in the server name from the processing option template. When it returns from that application, run the data source override again, sending a blank for the data source; this removes the override. Execute the Close button to close out this front end application; this way the user never actually sees this custom application. It's simply a front end that you use to control which server map to use.

This Article Continues...

Subscribers, log in from our main search page to access the full article:

www.JDEtips.com/MyAccess.html

Not a Subscriber? Gain access to our full library of JDE topics:

www.JDEtips.com/JD-Edwards-Library

Visit www.JDEtips.com for information on the JDEtips University schedule, private training and consulting, and our Knowledge Express Document Library.

License Information: The use of JDE is granted to JDEtips, Inc. by permission from J.D. Edwards World Source Company. The information on this website and in our publications is the copyrighted work of JDEtips, Inc. and is owned by JDEtips, Inc.

NO WARRANTY: This documentation is delivered as is, and JDEtips, Inc. makes no warranty as to its accuracy or use. Any use of this documentation is at the risk of the user. Although we make every good faith effort to ensure accuracy, this document may include technical or other inaccuracies or typographical errors. JDEtips, Inc. reserves the right to make changes without prior notice.

Oracle and J.D. Edwards EnterpriseOne and World are trademarks or registered trademarks of Oracle Corporation. All other trademarks and product names are the property of their respective owners.

Copyright © by JDEtips, Inc.